

Cytokeratin 8 (phospho Ser74) antibody

Cat. No. GTX50320

| | |
|---------------------|------------|
| Host | Rabbit |
| Clonality | Polyclonal |
| Isotype | IgG |
| Applications | WB, ICC/IF |
| Reactivity | Human |

Package
100 µl

Applications

Application Note

*Optimal dilutions/concentrations should be determined by the researcher.

| Suggested dilution | Recommended dilution |
|--------------------|----------------------|
| WB | 1:500-1:1000 |
| ICC/IF | 1:100-1:200 |

Not tested in other applications.

Calculated MW 54 kDa. ([Note](#))

Properties

| | |
|----------------------|--|
| Form | Liquid |
| Buffer | PBS, 150mM NaCl, 50% Glycerol |
| Preservative | 0.02% Sodium azide |
| Storage | Store as concentrated solution. Centrifuge briefly prior to opening vial. For short-term storage (1-2 weeks), store at 4°C. For long-term storage, aliquot and store at -20°C or below. Avoid multiple freeze-thaw cycles. |
| Concentration | 1 mg/ml (Please refer to the vial label for the specific concentration.) |
| Immunogen | Peptide sequence around phosphorylation site of serine 74 (L-L-S(p)-P-L) derived from human Cytokeratin 8. |
| Purification | Purified by antigen-affinity chromatography. Non-phospho specific antibodies were removed by chromatography using non-phosphopeptide. |
| Conjugation | Unconjugated |

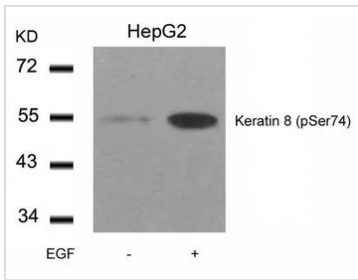
Note

For laboratory research use only. Not for any clinical, therapeutic, or diagnostic use in humans or animals. Not for animal or human consumption.

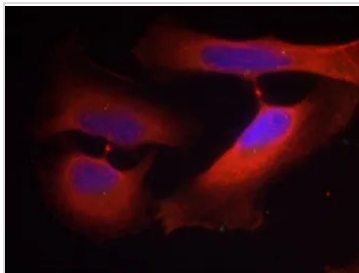
Purchasers shall not, and agree not to enable third parties to, analyze, copy, reverse engineer or otherwise attempt to determine the structure or sequence of the product.



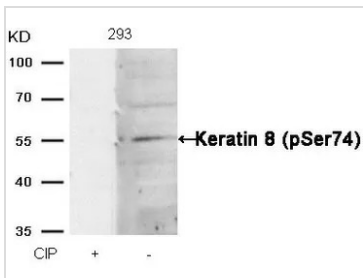
For full product information, images and publications, please visit our [website](#).

DATA IMAGES

GTX50320 WB Image

WB analysis of extracts from HepG2 cells untreated or treated with EGF using GTX50320 Cytokeratin 8 (phospho Ser74) antibody.


GTX50320 ICC/IF Image

ICC/IF analysis of methanol-fixed HeLa cells using GTX50320 Cytokeratin 8 (phospho Ser74) antibody.


GTX50320 WB Image

WB analysis of extracts from 293 cells treated with calf intestinal phosphatase (CIP) using GTX50320 Cytokeratin 8 (phospho Ser74) antibody.



For full product information, images and publications, please visit our [website](https://www.genetex.com).