

# SHC1 (phospho Tyr317) antibody

**Cat. No. GTX50326**

<b>Host</b>	Rabbit
<b>Clonality</b>	Polyclonal
<b>Isotype</b>	IgG
<b>Applications</b>	WB, ICC/IF, IHC-P
<b>Reactivity</b>	Human

**Package**  
100 µl

## Applications

### Application Note

\*Optimal dilutions/concentrations should be determined by the researcher.

Suggested dilution	Recommended dilution
WB	1:500-1:1000
ICC/IF	1:100-1:200
IHC-P	1:50-1:100

Not tested in other applications.

**Calculated MW** 63 kDa. ( [Note](#) )

**Product Note** This antibody is raised against human SHC1 phosphorylated at Tyr427 of p66Shc (Uniprot #P29353-1). Based on sequence homology, it is corresponding to human SHC1 phosphorylated at Tyr317 of p52Shc (Uniprot #P29353-2).

## Properties

<b>Form</b>	Liquid
<b>Buffer</b>	PBS, 150mM NaCl, 50% Glycerol
<b>Preservative</b>	0.02% Sodium azide
<b>Storage</b>	Store as concentrated solution. Centrifuge briefly prior to opening vial. For short-term storage (1-2 weeks), store at 4°C. For long-term storage, aliquot and store at -20°C or below. Avoid multiple freeze-thaw cycles.
<b>Concentration</b>	1 mg/ml (Please refer to the vial label for the specific concentration.)
<b>Immunogen</b>	Peptide sequence around phosphorylation site of tyrosine 427 (P-S-Y(p)-V-N derived from human SHC1.
<b>Purification</b>	Purified by antigen-affinity chromatography. Non-phospho specific antibodies were removed by chromatography using non-phosphopeptide.
<b>Conjugation</b>	Unconjugated



For full product information, images and publications, please visit our [website](#).

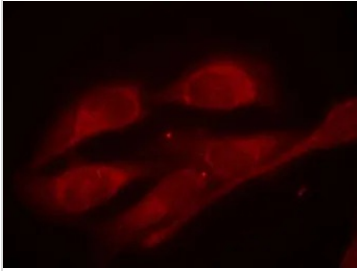
Date 2026 / 01 / 08 Page 1 of 2

For laboratory research use only. Not for any clinical, therapeutic, or diagnostic use in humans or animals. Not for animal or human consumption.

**Note**

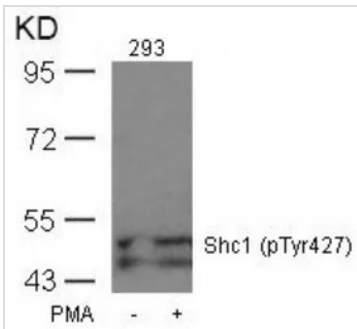
Purchasers shall not, and agree not to enable third parties to, analyze, copy, reverse engineer or otherwise attempt to determine the structure or sequence of the product.

## DATA IMAGES



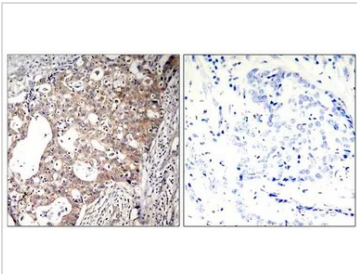
### GTx50326 ICC/IF Image

ICC/IF analysis of methanol-fixed HeLa cells using GTx50326 SHC1 (phospho Tyr317) antibody.



### GTx50326 WB Image

WB analysis of extracts from 293 cells untreated or treated with PMA using GTx50326 SHC1 (phospho Tyr317) antibody.



### GTx50326 IHC-P Image

IHC-P analysis of human breast carcinoma tissue using GTx50326 SHC1 (phospho Tyr317) antibody.

Left : Primary antibody

Right : Primary antibody pre-incubated with the antigen specific peptide



For full product information, images and publications, please visit our [website](#).