

Smad1 (phospho Ser465) antibody

Cat. No. GTX50330

Host	Rabbit
Clonality	Polyclonal
Isotype	IgG
Applications	WB
Reactivity	Human

Package
100 µl

Applications

Application Note

*Optimal dilutions/concentrations should be determined by the researcher.

Suggested dilution	Recommended dilution
WB	1:500-1:1000

Not tested in other applications.

Calculated MW 52 kDa. ([Note](#))

Product Note

This antibody is raised against human Smad1 phosphorylated at Ser465. Based on sequence homology, it is predicted to react with smad5 and smad8(9) when phosphorylated at the corresponding residues - smad5 Ser465 and smad8(9) Ser467.

Properties

Form	Liquid
Buffer	PBS, 150mM NaCl, 50% Glycerol
Preservative	0.02% Sodium azide
Storage	Store as concentrated solution. Centrifuge briefly prior to opening vial. For short-term storage (1-2 weeks), store at 4°C. For long-term storage, aliquot and store at -20°C or below. Avoid multiple freeze-thaw cycles.
Concentration	1 mg/ml (Please refer to the vial label for the specific concentration.)
Immunogen	Peptide sequence around phosphorylation site of serine 465 (I-S-S-V-S(p)) derived from human Smad1.
Purification	Purified by antigen-affinity chromatography. Non-phospho specific antibodies were removed by chromatography using non-phosphopeptide.
Conjugation	Unconjugated

Note

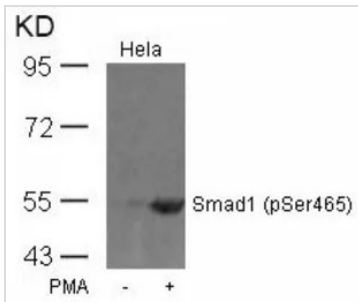
For laboratory research use only. Not for any clinical, therapeutic, or diagnostic use in humans or animals. Not for animal or human consumption.

Purchasers shall not, and agree not to enable third parties to, analyze, copy, reverse engineer or otherwise attempt to determine the structure or sequence of the product.



For full product information, images and publications, please visit our [website](#).

DATA IMAGES

**GTX50330 WB Image**

WB analysis of extracts from HeLa cells untreated or treated with PMA using GTX50330 Smad1 (phospho Ser465) antibody.



For full product information, images and publications, please visit our [website](#).