

## Aurora A (phospho Thr288) antibody

Cat. No. GTX50345

|             |            |
|-------------|------------|
| Host        | Rabbit     |
| Clonality   | Polyclonal |
| Isotype     | IgG        |
| Application | WB, IHC-P  |
| Reactivity  | Human      |

Package  
100 µl

## APPLICATION

## Application Note

\*Optimal dilutions/concentrations should be determined by the researcher.

| Suggested dilution | Recommended dilution |
|--------------------|----------------------|
| WB                 | Assay dependent      |
| IHC-P              | 1:50-1:100           |

Not tested in other applications.

Calculated MW 46 kDa. ( [Note](#) )

## PROPERTIES

|               |  |
|---------------|--|
| Form          | Liquid   |
| Buffer        | PBS, 150mM NaCl, 50% Glycerol  |
| Preservative  | 0.02% Sodium azide   |
| Storage       | Store as concentrated solution. Centrifuge briefly prior to opening vial. For short-term storage (1-2 weeks), store at 4°C. For long-term storage, aliquot and store at -20°C or below. Avoid multiple freeze-thaw cycles. |
| Concentration | 1 mg/ml (Please refer to the vial label for the specific concentration.)   |
| Immunogen     | Peptide sequence around phosphorylation site of threonine 288 (R-T-T(p)-L-M) derived from human Aurora A.  |
| Purification  | Purified by antigen-affinity chromatography. Non-phospho specific antibodies were removed by chromatography using non-phosphopeptide.  |
| Conjugation   | Unconjugated   |

## Note

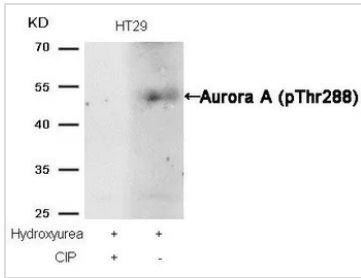
For laboratory research use only. Not for any clinical, therapeutic, or diagnostic use in humans or animals. Not for animal or human consumption.

Purchasers shall not, and agree not to enable third parties to, analyze, copy, reverse engineer or otherwise attempt to determine the structure or sequence of the product.



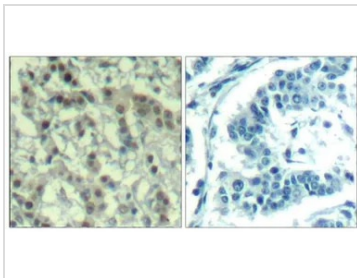
For full product information, images and publications, please visit our [website](#).

## DATA IMAGES



### GTX50345 WB Image

WB analysis of extracts from HT-29 cells treated with Hydroxyurea or calf intestinal phosphatase (CIP) using GTX50345 Aurora A (phospho Thr288) antibody.



### GTX50345 IHC-P Image

IHC-P analysis of human breast carcinoma tissue using GTX50345 Aurora A (phospho Thr288) antibody.

Left : Primary antibody

Right : Primary antibody pre-incubated with the antigen specific peptide



For full product information, images and publications, please visit our [website](https://www.genetex.com).