

MARCKS (phospho Ser170) antibody

Cat. No. GTX50348

Host	Rabbit
Clonality	Polyclonal
Isotype	IgG
Applications	WB, IHC-P
Reactivity	Human, Mouse

Package
100 µl

Applications

Application Note

*Optimal dilutions/concentrations should be determined by the researcher.

Suggested dilution	Recommended dilution
WB	1:500-1:1000
IHC-P	1:50-1:100

Not tested in other applications.

Calculated MW 32 kDa. ([Note](#))

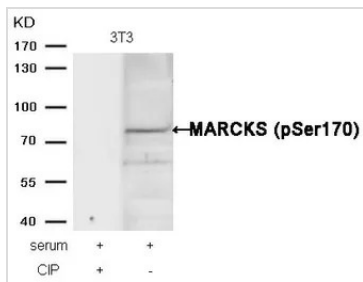
Properties

Form	Liquid
Buffer	PBS, 150mM NaCl, 50% Glycerol
Preservative	0.02% Sodium azide
Storage	Store as concentrated solution. Centrifuge briefly prior to opening vial. For short-term storage (1-2 weeks), store at 4°C. For long-term storage, aliquot and store at -20°C or below. Avoid multiple freeze-thaw cycles.
Concentration	1 mg/ml (Please refer to the vial label for the specific concentration.)
Immunogen	Peptide sequence around phosphorylation site of Serine 170 (G-F-S(p)-F-K) derived from human MARCKS.
Purification	Purified by antigen-affinity chromatography. Non-phospho specific antibodies were removed by chromatography using non-phosphopeptide.
Conjugation	Unconjugated
Note	For laboratory research use only. Not for any clinical, therapeutic, or diagnostic use in humans or animals. Not for animal or human consumption. Purchasers shall not, and agree not to enable third parties to, analyze, copy, reverse engineer or otherwise attempt to determine the structure or sequence of the product.



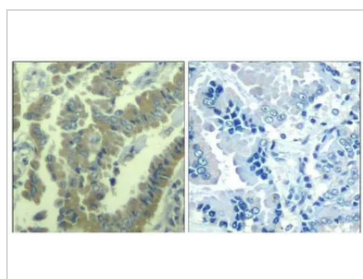
For full product information, images and publications, please visit our [website](#).

DATA IMAGES



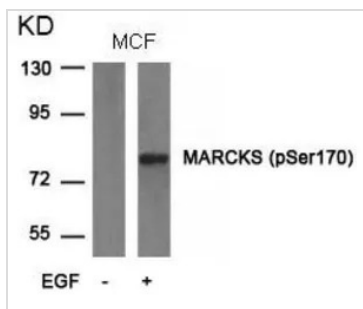
GTX50348 WB Image

WB analysis of extracts from 3T3 cells treated with serum or calf intestinal phosphatase (CIP) using GTX50348 MARCKS (phospho Ser170) antibody.



GTX50348 IHC-P Image

IHC-P analysis of human lung carcinoma tissue using GTX50348 MARCKS (phospho Ser170) antibody.
 Left : Primary antibody
 Right : Primary antibody pre-incubated with the antigen specific peptide



GTX50348 WB Image

WB analysis of extracts from MCF cells untreated or treated with EGF using GTX50348 MARCKS (phospho Ser170) antibody.



For full product information, images and publications, please visit our [website](#).