

# CDK6 (Phospho Tyr13) antibody

**Cat. No. GTX50352**

<b>Host</b>	Rabbit
<b>Clonality</b>	Polyclonal
<b>Isotype</b>	IgG
<b>Application</b>	WB, ICC/IF, IHC-P
<b>Reactivity</b>	Human

**Package**  
100 µl

## APPLICATION

### Application Note

\*Optimal dilutions/concentrations should be determined by the researcher.

Suggested dilution	Recommended dilution
WB	1:500-1:1000
ICC/IF	1:100-1:200
IHC-P	1:50-1:100

Not tested in other applications.

**Calculated MW** 37 kDa. ( [Note](#) )

## PROPERTIES

<b>Form</b>	Liquid
<b>Buffer</b>	PBS (without Mg <sup>2+</sup> and Ca <sup>2+</sup> ) pH7.4, 150mM NaCl, 50% Glycerol
<b>Preservative</b>	0.02% Sodium azide
<b>Storage</b>	Store as concentrated solution. Centrifuge briefly prior to opening vial. For short-term storage (1-2 weeks), store at 4°C. For long-term storage, aliquot and store at -20°C or below. Avoid multiple freeze-thaw cycles.
<b>Concentration</b>	1 mg/ml (Please refer to the vial label for the specific concentration.)
<b>Immunogen</b>	Peptide sequence around phosphorylation site of tyrosine 13 (Q-Q-Y(p)-E-C) derived from human CDK6.
<b>Purification</b>	Purified by antigen-affinity chromatography. Non-phospho specific antibodies were removed by chromatography using non-phosphopeptide.
<b>Conjugation</b>	Unconjugated

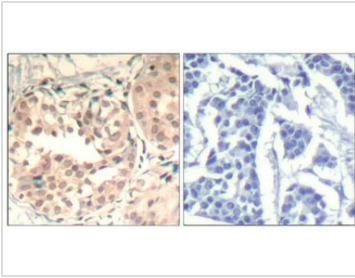
### Note

For laboratory research use only. Not for any clinical, therapeutic, or diagnostic use in humans or animals. Not for animal or human consumption.

Purchasers shall not, and agree not to enable third parties to, analyze, copy, reverse engineer or otherwise attempt to determine the structure or sequence of the product.



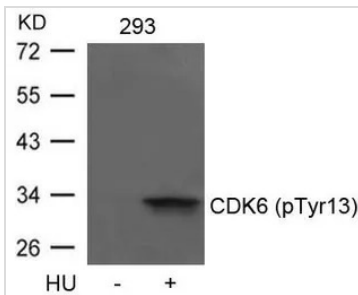
For full product information, images and publications, please visit our [website](#).

**DATA IMAGES**

**GTX50352 IHC-P Image**

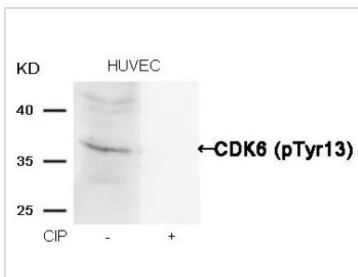
IHC-P analysis of human breast carcinoma tissue using GTX50352 CDK6 (Phospho Tyr13) antibody.

Left : Primary antibody

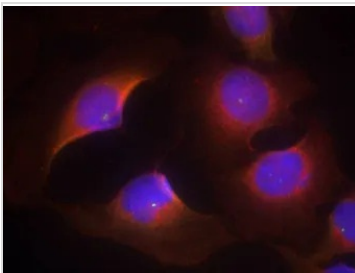
Right : Primary antibody pre-incubated with the antigen specific peptide


**GTX50352 WB Image**

WB analysis of extracts from 293 cells untreated or treated with HU using GTX50352 CDK6 (Phospho Tyr13) antibody.


**GTX50352 WB Image**

WB analysis of extracts from HUVEC cells treated with calf intestinal phosphatase (CIP) using GTX50352 CDK6 (Phospho Tyr13) antibody.


**GTX50352 ICC/IF Image**

ICC/IF analysis of methanol-fixed HeLa cells using GTX50352 CDK6 (Phospho Tyr13) antibody.



For full product information, images and publications, please visit our [website](https://www.genetex.com).