

Syk (phospho Tyr323) antibody

Cat. No. GTX50355

Host	Rabbit
Clonality	Polyclonal
Isotype	IgG
Applications	WB, ICC/IF, IHC-P
Reactivity	Human

Package
100 µl

Applications

Application Note

*Optimal dilutions/concentrations should be determined by the researcher.

Suggested dilution	Recommended dilution
WB	1:500-1:1000
ICC/IF	1:100-1:200
IHC-P	1:50-1:100

Not tested in other applications.

Calculated MW 72 kDa. ([Note](#))

Properties

Form	Liquid
Buffer	PBS, 150mM NaCl, 50% Glycerol
Preservative	0.02% Sodium azide
Storage	Store as concentrated solution. Centrifuge briefly prior to opening vial. For short-term storage (1-2 weeks), store at 4°C. For long-term storage, aliquot and store at -20°C or below. Avoid multiple freeze-thaw cycles.
Concentration	1 mg/ml (Please refer to the vial label for the specific concentration.)
Immunogen	Peptide sequence around phosphorylation site of tyrosine 323 (N-P-Y(p)-E- P) derived from human Syk.
Purification	Purified by antigen-affinity chromatography. Non-phospho specific antibodies were removed by chromatography using non-phosphopeptide.
Conjugation	Unconjugated

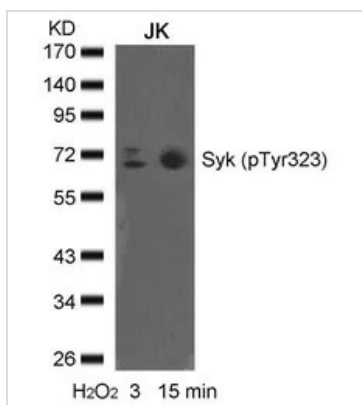
Note For laboratory research use only. Not for any clinical, therapeutic, or diagnostic use in humans or animals. Not for animal or human consumption.

Purchasers shall not, and agree not to enable third parties to, analyze, copy, reverse engineer or otherwise attempt to determine the structure or sequence of the product.

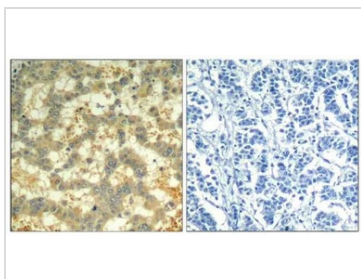


For full product information, images and publications, please visit our [website](#).

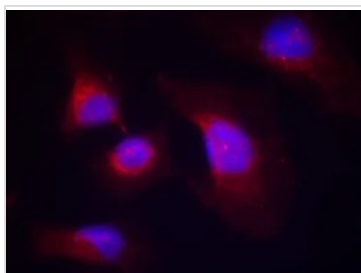
DATA IMAGES

**GTX50355 WB Image**

WB analysis of extracts from JK cells untreated or treated with H₂O₂ for the indicated times using GTX50355 Syk (phospho Tyr323) antibody.

**GTX50355 IHC-P Image**

IHC-P analysis of human breast carcinoma tissue using GTX50355 Syk (phospho Tyr323) antibody. Left : Primary antibody
Right : Primary antibody pre-incubated with the antigen specific peptide

**GTX50355 ICC/IF Image**

ICC/IF analysis of methanol-fixed HeLa cells using GTX50355 Syk (phospho Tyr323) antibody.



For full product information, images and publications, please visit our [website](#).