

EGFR (phospho Tyr1173) antibody

Cat. No. GTX50358

Host	Goat
Clonality	Polyclonal
Isotype	IgG
Applications	WB
Reactivity	Human

Package
100 µl

Applications

Application Note

*Optimal dilutions/concentrations should be determined by the researcher.

Suggested dilution	Recommended dilution
WB	1:500-1:1000

Not tested in other applications.

Calculated MW 134 kDa. ([Note](#))

Product Note The full-length EGFR includes the 24 aa signal peptide that is cleaved during EGFR maturation. The Tyr1173 of mature EGFR is equivalent to Tyr1197 of uncleaved EGFR.

Properties

Form	Liquid
Buffer	PBS, 150mM NaCl, 50% Glycerol
Preservative	0.02% Sodium azide
Storage	Store as concentrated solution. Centrifuge briefly prior to opening vial. For short-term storage (1-2 weeks), store at 4°C. For long-term storage, aliquot and store at -20°C or below. Avoid multiple freeze-thaw cycles.
Concentration	1 mg/ml (Please refer to the vial label for the specific concentration.)
Immunogen	Peptide sequence around phosphorylation site of tyrosine 1173 (A-E-Y(p)-L-R) derived from human EGFR.
Purification	Purified by antigen-affinity chromatography. Non-phospho specific antibodies were removed by chromatography using non-phosphopeptide.
Conjugation	Unconjugated

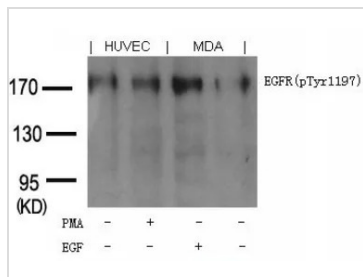
Note

For laboratory research use only. Not for any clinical, therapeutic, or diagnostic use in humans or animals. Not for animal or human consumption.

Purchasers shall not, and agree not to enable third parties to, analyze, copy, reverse engineer or otherwise attempt to determine the structure or sequence of the product.



For full product information, images and publications, please visit our [website](#).

DATA IMAGES

GTX50358 WB Image

WB analysis of extracts from PMA-treated HUVEC cells or EGF-treated MDA cells using GTX50358 EGFR (phospho Tyr1173) antibody.



For full product information, images and publications, please visit our [website](#).