

CDC25B (phospho Ser149) antibody

Cat. No. GTX50360

Host	Rabbit
Clonality	Polyclonal
Isotype	IgG
Applications	WB
Reactivity	Human, Mouse

Package
100 µl

Applications

Application Note

*Optimal dilutions/concentrations should be determined by the researcher.

Suggested dilution	Recommended dilution
WB	1:500-1:1000

Not tested in other applications.

Calculated MW 65 kDa. ([Note](#))

Properties

Form	Liquid
Buffer	PBS, 150mM NaCl, 50% Glycerol
Preservative	0.02% Sodium azide
Storage	Store as concentrated solution. Centrifuge briefly prior to opening vial. For short-term storage (1-2 weeks), store at 4°C. For long-term storage, aliquot and store at -20°C or below. Avoid multiple freeze-thaw cycles.
Concentration	1 mg/ml (Please refer to the vial label for the specific concentration.)
Immunogen	Peptide sequence around phosphorylation site of Serine 149 (F-R-S(p)-L-P) derived from mouse CDC25B.
Purification	Purified by antigen-affinity chromatography.
Conjugation	Unconjugated

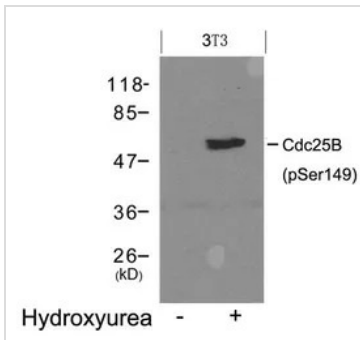
Note For laboratory research use only. Not for any clinical, therapeutic, or diagnostic use in humans or animals. Not for animal or human consumption.

Purchasers shall not, and agree not to enable third parties to, analyze, copy, reverse engineer or otherwise attempt to determine the structure or sequence of the product.



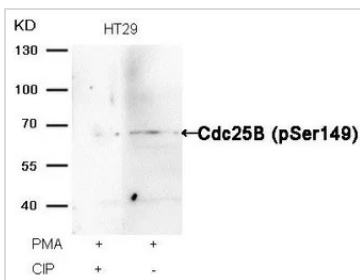
For full product information, images and publications, please visit our [website](#).

DATA IMAGES



GTX50360 WB Image

WB analysis of extracts from 3T3 cells untreated (lane 1) or treated with Hydroxyurea (lane 2) using GTX50360 CDC25B (phospho Ser149) antibody.



GTX50360 WB Image

WB analysis of extracts from HT-29 cells treated with PMA or calf intestinal phosphatase (CIP) using GTX50360 CDC25B (phospho Ser149) antibody.



For full product information, images and publications, please visit our [website](http://www.genetex.com).