

Myosin Light Chain 2 antibody

Cat. No. GTX50495

Host	Rabbit
Clonality	Polyclonal
Isotype	IgG
Applications	WB, ICC/IF
Reactivity	Human, Mouse

Package
100 µl

Applications

Application Note

*Optimal dilutions/concentrations should be determined by the researcher.

Suggested dilution	Recommended dilution
WB	1:500-1:1000
ICC/IF	1:100-1:200

Not tested in other applications.

Calculated MW	20 kDa. (Note)
Product Note	This antibody detects Myosin light chain 2, slow skeletal/ventricular muscle isoform (MLC-2v) protein when phosphorylated at Tyr118.

Properties

Form	Liquid
Buffer	PBS, 150mM NaCl, 50% Glycerol
Preservative	0.02% Sodium azide
Storage	Store as concentrated solution. Centrifuge briefly prior to opening vial. For short-term storage (1-2 weeks), store at 4°C. For long-term storage, aliquot and store at -20°C or below. Avoid multiple freeze-thaw cycles.
Concentration	1 mg/ml (Please refer to the vial label for the specific concentration.)
Immunogen	Peptide sequence around aa.17~21 (A-T-S-N-V) derived from human Myosin Light Chain 2.
Purification	Purified by antigen-affinity chromatography.
Conjugation	Unconjugated

Note

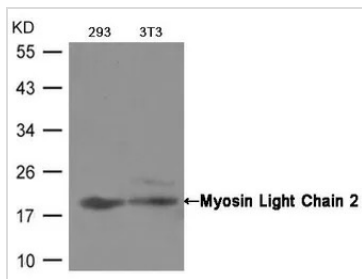
For laboratory research use only. Not for any clinical, therapeutic, or diagnostic use in humans or animals. Not for animal or human consumption.

Purchasers shall not, and agree not to enable third parties to, analyze, copy, reverse engineer or otherwise attempt to determine the structure or sequence of the product.



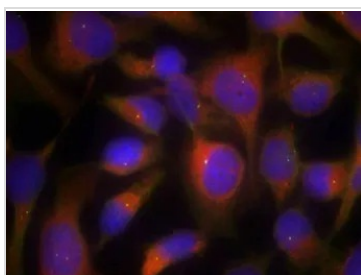
For full product information, images and publications, please visit our [website](#).

DATA IMAGES



GTX50495 WB Image

WB analysis of extracts from 293 and 3T3 cells using GTX50495 Myosin Light Chain 2 antibody.



GTX50495 ICC/IF Image

ICC/IF analysis of methanol-fixed HeLa cells using GTX50495 Myosin Light Chain 2 antibody.



For full product information, images and publications, please visit our [website](https://www.genetex.com).