

RPS6 antibody

Cat. No. GTX50552

Host	Rabbit
Clonality	Polyclonal
Isotype	IgG
Application	WB, ICC/IF, IHC-P
Reactivity	Human

Package
100 µl

APPLICATION

Application Note

*Optimal dilutions/concentrations should be determined by the researcher.

Suggested dilution	Recommended dilution
WB	1:500-1:1000
ICC/IF	1:100-1:200
IHC-P	1:50-1:100

Not tested in other applications.

Calculated MW 29 kDa. ([Note](#))

PROPERTIES

Form	Liquid
Buffer	PBS (without Mg ²⁺ and Ca ²⁺) pH7.4, 150mM NaCl, 50% Glycerol
Preservative	0.02% Sodium azide
Storage	Store as concentrated solution. Centrifuge briefly prior to opening vial. For short-term storage (1-2 weeks), store at 4°C. For long-term storage, aliquot and store at -20°C or below. Avoid multiple freeze-thaw cycles.
Concentration	1 mg/ml (Please refer to the vial label for the specific concentration.)
Immunogen	Peptide sequence around aa. 233~237 (R-L-S-S-L) derived from human RPS6.
Purification	Purified by antigen-affinity chromatography.
Conjugation	Unconjugated

Note

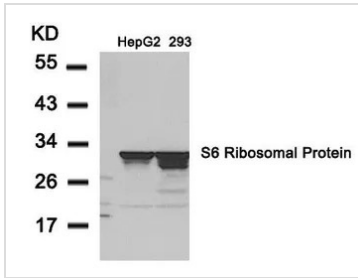
For laboratory research use only. Not for any clinical, therapeutic, or diagnostic use in humans or animals. Not for animal or human consumption.

Purchasers shall not, and agree not to enable third parties to, analyze, copy, reverse engineer or otherwise attempt to determine the structure or sequence of the product.



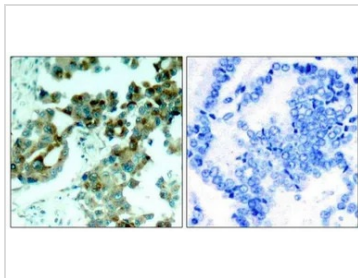
For full product information, images and publications, please visit our [website](#).

DATA IMAGES



GTX50552 WB Image

WB analysis of extracts from HepG2 and 293 cells using GTX50552 RPS6 antibody.

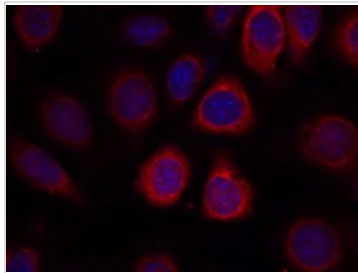


GTX50552 IHC-P Image

IHC-P analysis of human lung carcinoma tissue using GTX50552 RPS6 antibody.

Left : Primary antibody

Right : Primary antibody pre-incubated with the antigen specific peptide



GTX50552 ICC/IF Image

ICC/IF analysis of methanol-fixed MCF-7 cells using GTX50552 RPS6 antibody.



For full product information, images and publications, please visit our [website](https://www.genetex.com).