

p38 MAPK antibody

Cat. No. GTX50566

Host	Rabbit
Clonality	Polyclonal
Isotype	IgG
Applications	WB
Reactivity	Human, Pig

References (2)

Package

100 µl

Applications

Application Note

*Optimal dilutions/concentrations should be determined by the researcher.

Suggested dilution	Recommended dilution
WB	1:500-1:1000

Not tested in other applications.

Calculated MW 41 kDa. ([Note](#))

Properties

Form	Liquid
Buffer	PBS, 150mM NaCl, 50% Glycerol
Preservative	0.02% Sodium azide
Storage	Store as concentrated solution. Centrifuge briefly prior to opening vial. For short-term storage (1-2 weeks), store at 4°C. For long-term storage, aliquot and store at -20°C or below. Avoid multiple freeze-thaw cycles.
Concentration	1 mg/ml (Please refer to the vial label for the specific concentration.)
Immunogen	Peptide sequence around aa. 180~184 (T-G-Y-V-A) derived from human p38 MAPK.
Purification	Purified by antigen-affinity chromatography.
Conjugation	Unconjugated

Note

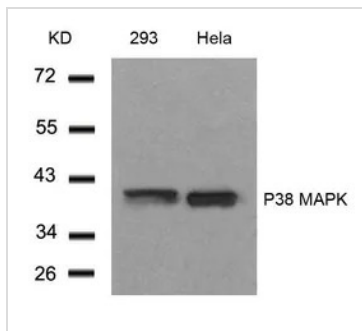
For laboratory research use only. Not for any clinical, therapeutic, or diagnostic use in humans or animals. Not for animal or human consumption.

Purchasers shall not, and agree not to enable third parties to, analyze, copy, reverse engineer or otherwise attempt to determine the structure or sequence of the product.



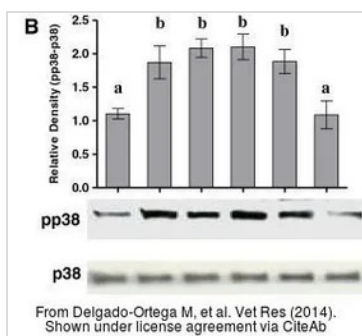
For full product information, images and publications, please visit our [website](#).

DATA IMAGES



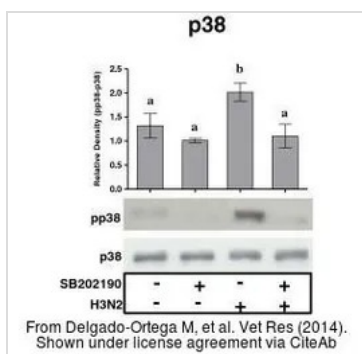
GTX50566 WB Image

WB analysis of extracts from 293 and HeLa cells using GTX50566 p38 MAPK antibody.



GTX50566 WB Image

The data was published in the journal Vet Res in 2014. [PMID: 24712747](https://pubmed.ncbi.nlm.nih.gov/24712747/)



GTX50566 WB Image

The data was published in the journal Vet Res in 2014. [PMID: 24712747](https://pubmed.ncbi.nlm.nih.gov/24712747/)



For full product information, images and publications, please visit our [website](https://www.genetex.com).