

MAPKAPK-2 antibody

Cat. No. GTX50617

Host	Rabbit
Clonality	Polyclonal
Isotype	IgG
Applications	WB, ICC/IF
Reactivity	Human, Mouse, Rat

Package
100 µl

Applications

Application Note

*Optimal dilutions/concentrations should be determined by the researcher.

Suggested dilution	Recommended dilution
WB	1:500-1:1000
ICC/IF	1:100-1:200

Not tested in other applications.

Calculated MW 46 kDa. ([Note](#))

Properties

Form	Liquid
Buffer	PBS, 150mM NaCl, 50% Glycerol
Preservative	0.02% Sodium azide
Storage	Store as concentrated solution. Centrifuge briefly prior to opening vial. For short-term storage (1-2 weeks), store at 4°C. For long-term storage, aliquot and store at -20°C or below. Avoid multiple freeze-thaw cycles.
Concentration	1 mg/ml (Please refer to the vial label for the specific concentration.)
Immunogen	Peptide sequence around aa.332~336 (P-Q-T-P-L) derived from human MAPKAPK-2.
Purification	Purified by antigen-affinity chromatography.
Conjugation	Unconjugated

Note

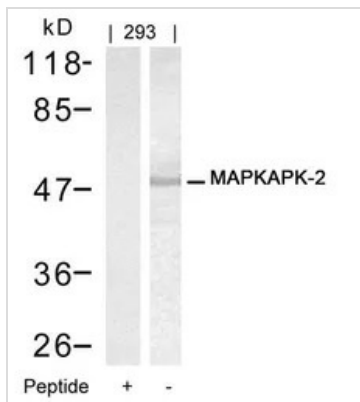
For laboratory research use only. Not for any clinical, therapeutic, or diagnostic use in humans or animals. Not for animal or human consumption.

Purchasers shall not, and agree not to enable third parties to, analyze, copy, reverse engineer or otherwise attempt to determine the structure or sequence of the product.



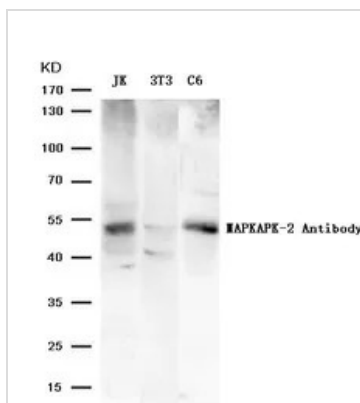
For full product information, images and publications, please visit our [website](#).

DATA IMAGES



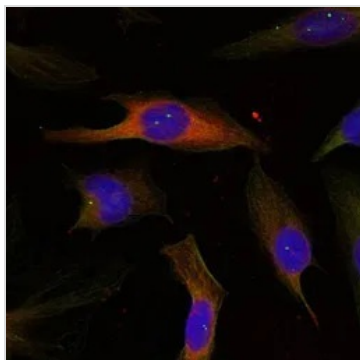
GTX50617 WB Image

WB analysis of extracts from 293 cells using GTX50617 MAPKAPK-2 antibody with or without blocking peptide.



GTX50617 WB Image

WB analysis of extracts from JK, 3T3, and C6 cells using GTX50617 MAPKAPK-2 antibody.



GTX50617 ICC/IF Image

ICC/IF analysis of methanol-fixed HeLa cells using GTX50617 MAPKAPK-2 antibody.



For full product information, images and publications, please visit our [website](https://www.genetex.com).