

## BMAL1 antibody

Cat. No. GTX50643

Host	Rabbit
Clonality	Polyclonal
Isotype	IgG
Applications	WB, ICC/IF, IHC-Fr
Reactivity	Human, Mouse, Rat

References ( 2 )

Package

100 µl

## Applications

## Application Note

\*Optimal dilutions/concentrations should be determined by the researcher.

Suggested dilution	Recommended dilution
WB	1:500-1:1000
ICC/IF	Assay dependent
IHC-Fr	Assay dependent

Not tested in other applications.

Calculated MW 69 kDa. ( [Note](#) )

## Properties

Form	Liquid
Buffer	PBS, 150mM NaCl, 50% Glycerol
Preservative	0.02% Sodium azide
Storage	Store as concentrated solution. Centrifuge briefly prior to opening vial. For short-term storage (1-2 weeks), store at 4°C. For long-term storage, aliquot and store at -20°C or below. Avoid multiple freeze-thaw cycles.
Concentration	1 mg/ml (Please refer to the vial label for the specific concentration.)
Immunogen	Peptide sequence around aa.569~573 (S-S-S-I-L) derived from human BMAL1.
Purification	Purified by antigen-affinity chromatography.
Conjugation	Unconjugated

## Note

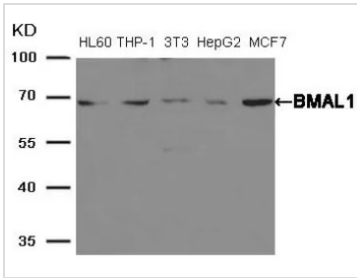
For laboratory research use only. Not for any clinical, therapeutic, or diagnostic use in humans or animals. Not for animal or human consumption.

Purchasers shall not, and agree not to enable third parties to, analyze, copy, reverse engineer or otherwise attempt to determine the structure or sequence of the product.



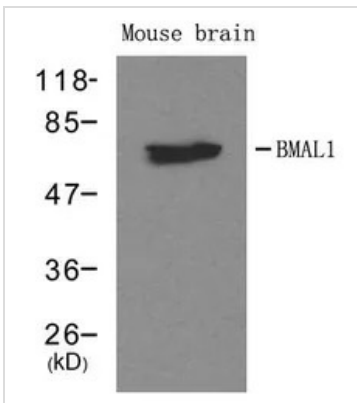
For full product information, images and publications, please visit our [website](#).

DATA IMAGES



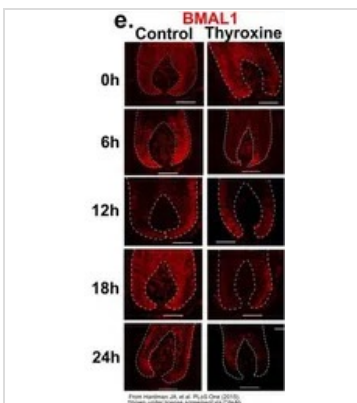
**GTX50643 WB Image**

WB analysis of extracts from HL-60, THP-1, 3T3, HepG2, and MCF-7 cells using GTX50643 BMAL1 antibody.



**GTX50643 WB Image**

WB analysis of extracts from mouse brain tissue using GTX50643 BMAL1 antibody.



**GTX50643 IHC-Fr Image**

The data was published in the journal PLoS One in 2015. [PMID: 25822259](https://pubmed.ncbi.nlm.nih.gov/25822259/)



For full product information, images and publications, please visit our [website](https://www.genetex.com).