

## ATF2 (phospho Ser62) antibody

Cat. No. GTX50686

Host	Rabbit
Clonality	Polyclonal
Isotype	IgG
Applications	WB, IHC-P
Reactivity	Human

Package  
100 µl

## Applications

## Application Note

\*Optimal dilutions/concentrations should be determined by the researcher.

Suggested dilution	Recommended dilution
WB	1:500-1:1000
IHC-P	1:50-1:100

Not tested in other applications.

Calculated MW 55 kDa. ( [Note](#) )

## Product Note

This antibody is raised against human ATF2 phosphorylated at Ser62. Based on sequence homology, it is predicted to react with mouse/rat ATF2 when phosphorylated at the corresponding residues - ATF2 Ser44.

## Properties

Form	Liquid
Buffer	PBS, 150mM NaCl, 50% Glycerol
Preservative	0.02% Sodium azide
Storage	Store as concentrated solution. Centrifuge briefly prior to opening vial. For short-term storage (1-2 weeks), store at 4°C. For long-term storage, aliquot and store at -20°C or below. Avoid multiple freeze-thaw cycles.
Concentration	1 mg/ml (Please refer to the vial label for the specific concentration.)
Immunogen	Peptide sequence around phosphorylation site of serine 62 (N-D-S(p)-V-I) derived from human ATF2.
Purification	Purified by antigen-affinity chromatography. Non-phospho specific antibodies were removed by chromatography using non-phosphopeptide.
Conjugation	Unconjugated



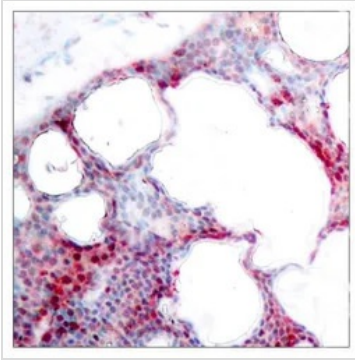
For full product information, images and publications, please visit our [website](#).

Date 2026 / 01 / 13 Page 1 of 2

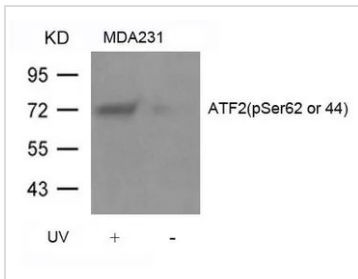
For laboratory research use only. Not for any clinical, therapeutic, or diagnostic use in humans or animals. Not for animal or human consumption.

**Note**

Purchasers shall not, and agree not to enable third parties to, analyze, copy, reverse engineer or otherwise attempt to determine the structure or sequence of the product.

**DATA IMAGES**

**GTX50686 IHC-P Image**

IHC-P analysis of human breast carcinoma tissue using GTX50686 ATF2 (phospho Ser62) antibody.


**GTX50686 WB Image**

WB analysis of extracts from MDA231 cells untreated or treated with UV using GTX50686 ATF2 (phospho Ser62) antibody.



For full product information, images and publications, please visit our [website](https://www.genetex.com).