

VEGF Receptor 3 antibody

Cat. No. GTX50694

Host	Rabbit
Clonality	Polyclonal
Isotype	IgG
Application	WB
Reactivity	Human, Mouse

Package
100 µl

APPLICATION

Application Note

*Optimal dilutions/concentrations should be determined by the researcher.

Suggested dilution	Recommended dilution
WB	1:500-1:1000

Not tested in other applications.

Calculated MW 153 kDa. ([Note](#))

PROPERTIES

Form	Liquid
Buffer	PBS (without Mg ²⁺ and Ca ²⁺) pH7.4, 150mM NaCl, 50% Glycerol
Preservative	0.02% Sodium azide
Storage	Store as concentrated solution. Centrifuge briefly prior to opening vial. For short-term storage (1-2 weeks), store at 4°C. For long-term storage, aliquot and store at -20°C or below. Avoid multiple freeze-thaw cycles.
Concentration	1 mg/ml (Please refer to the vial label for the specific concentration.)
Immunogen	Peptide sequence around aa.1279~1283 (L-A-S-E-E) derived from human VEGF Receptor 3.
Purification	Purified by antigen-affinity chromatography.
Conjugation	Unconjugated

Note

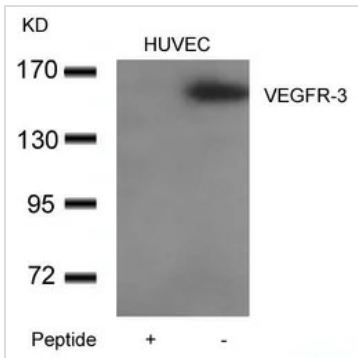
For laboratory research use only. Not for any clinical, therapeutic, or diagnostic use in humans or animals. Not for animal or human consumption.

Purchasers shall not, and agree not to enable third parties to, analyze, copy, reverse engineer or otherwise attempt to determine the structure or sequence of the product.



For full product information, images and publications, please visit our [website](#).

DATA IMAGES

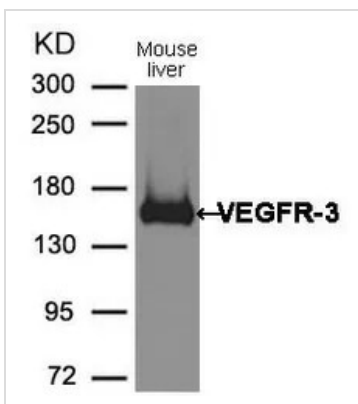


GTX50694 WB Image

WB analysis of extracts from HUVEC cells using GTX50694 VEGF Receptor 3 antibody.

Left : Primary antibody pre-incubated with the antigen specific peptide

Right : Primary antibody



GTX50694 WB Image

WB analysis of extracts from mouse liver tissue using GTX50694 VEGF Receptor 3 antibody.



For full product information, images and publications, please visit our [website](https://www.genetex.com).