

14-3-3 zeta (phospho Ser58) antibody

Cat. No. GTX50712

Host	Rabbit
Clonality	Polyclonal
Isotype	IgG
Applications	WB, ICC/IF, IHC-P
Reactivity	Human

Package
100 µl

Applications

Application Note

*Optimal dilutions/concentrations should be determined by the researcher.

Suggested dilution	Recommended dilution
WB	1:500-1:1000
ICC/IF	1:100-1:200
IHC-P	1:50-1:100

Not tested in other applications.

Calculated MW 28 kDa. ([Note](#))

Properties

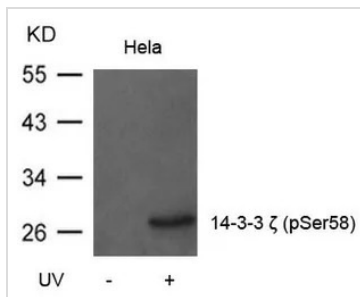
Form	Liquid
Buffer	PBS, 150mM NaCl, 50% Glycerol
Preservative	0.02% Sodium azide
Storage	Store as concentrated solution. Centrifuge briefly prior to opening vial. For short-term storage (1-2 weeks), store at 4°C. For long-term storage, aliquot and store at -20°C or below. Avoid multiple freeze-thaw cycles.
Concentration	1 mg/ml (Please refer to the vial label for the specific concentration.)
Immunogen	Peptide sequence around phosphorylation site of serine 58 (R-S-S(p)-W-R) derived from human 14-3-3 zeta.
Purification	Purified by antigen-affinity chromatography. Non-phospho specific antibodies were removed by chromatography using non-phosphopeptide.
Conjugation	Unconjugated

Note

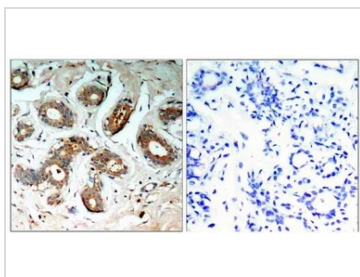
For laboratory research use only. Not for any clinical, therapeutic, or diagnostic use in humans or animals. Not for animal or human consumption.

Purchasers shall not, and agree not to enable third parties to, analyze, copy, reverse engineer or otherwise attempt to determine the structure or sequence of the product.

For full product information, images and publications, please visit our [website](#).

DATA IMAGES

GTX50712 WB Image

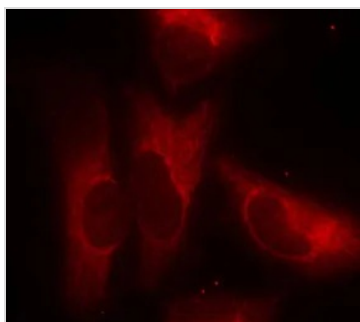
WB analysis of extracts from HeLa cells untreated or treated with UV using GTX50712 14-3-3 zeta (phospho Ser58) antibody.


GTX50712 IHC-P Image

IHC-P analysis of human breast carcinoma tissue using GTX50712 14-3-3 zeta (phospho Ser58) antibody.

Left : Primary antibody

Right : Primary antibody pre-incubated with the antigen specific peptide


GTX50712 ICC/IF Image

ICC/IF analysis of methanol-fixed HeLa cells using GTX50712 14-3-3 zeta (phospho Ser58) antibody.



For full product information, images and publications, please visit our [website](https://www.genetex.com).