

c-Abl (phospho Tyr412) antibody

Cat. No. GTX50859

Host	Rabbit
Clonality	Polyclonal
Isotype	IgG
Applications	WB, ICC/IF, IHC-P
Reactivity	Human

Package
100 µl

Applications

Application Note

*Optimal dilutions/concentrations should be determined by the researcher.

Suggested dilution	Recommended dilution
WB	1:500-1:1000
ICC/IF	1:100-1:200
IHC-P	1:50-1:100

Not tested in other applications.

Calculated MW	123 kDa. (Note)
Product Note	This antibody is raised against human c-Abl (isoform b) phosphorylated at Tyr412. Based on sequence homology, it is predicted to react with c-Abl (isoform a) or ABL2 when phosphorylated at the corresponding residues - c-Abl (isoform a) Tyr393 or ABL2 Tyr439.

Properties

Form	Liquid
Buffer	PBS, 150mM NaCl, 50% Glycerol
Preservative	0.02% Sodium azide
Storage	Store as concentrated solution. Centrifuge briefly prior to opening vial. For short-term storage (1-2 weeks), store at 4°C. For long-term storage, aliquot and store at -20°C or below. Avoid multiple freeze-thaw cycles.
Concentration	1 mg/ml (Please refer to the vial label for the specific concentration.)
Immunogen	Peptide sequence around phosphorylation site of tyrosine 412 (D-T-Y(p)-T-A) derived from Human c-Abl.
Purification	Purified by antigen-affinity chromatography. Non-phospho specific antibodies were removed by chromatography using non-phosphopeptide.
Conjugation	Unconjugated



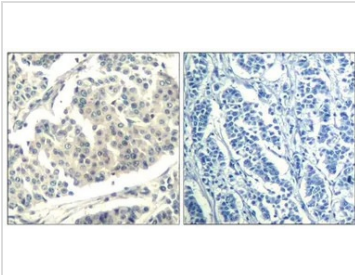
For full product information, images and publications, please visit our [website](#).

Date 2026 / 01 / 13 Page 1 of 2

For laboratory research use only. Not for any clinical, therapeutic, or diagnostic use in humans or animals. Not for animal or human consumption.

Note

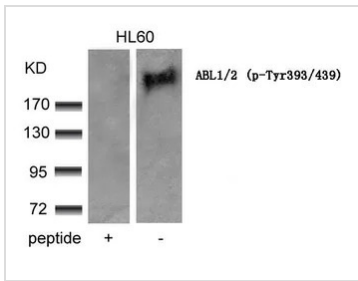
Purchasers shall not, and agree not to enable third parties to, analyze, copy, reverse engineer or otherwise attempt to determine the structure or sequence of the product.

DATA IMAGES

GTX50859 IHC-P Image

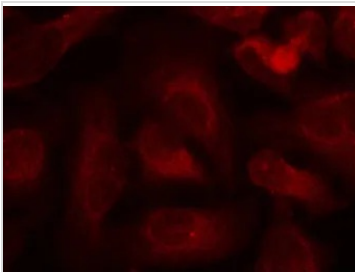
IHC-P analysis of human breast carcinoma tissue using GTX50859 c-Abl (phospho Tyr412) antibody.

Left : Primary antibody

Right : Primary antibody pre-incubated with the antigen specific peptide


GTX50859 WB Image

WB analysis of extracts from HL-60 cells using GTX50859 c-Abl (phospho Tyr412) antibody with or without blocking peptide.


GTX50859 ICC/IF Image

ICC/IF analysis of methanol-fixed HeLa cells using GTX50859 c-Abl (phospho Tyr412) antibody.



For full product information, images and publications, please visit our [website](https://www.genetex.com).