

AMPK alpha 1 + AMPK alpha 2 antibody

Cat. No. GTX50863

| | |
|---------------------|-------------------|
| Host | Rabbit |
| Clonality | Polyclonal |
| Isotype | IgG |
| Applications | WB, ICC/IF, IHC-P |
| Reactivity | Human, Mouse |

References (4)

Package

100 µl

Applications

Application Note

*Optimal dilutions/concentrations should be determined by the researcher.

| Suggested dilution | Recommended dilution |
|--------------------|----------------------|
| WB | 1:500-1:1000 |
| ICC/IF | 1:100-1:200 |
| IHC-P | 1:50-1:100 |

Not tested in other applications.

Properties

| | |
|----------------------|--|
| Form | Liquid |
| Buffer | PBS, 150mM NaCl, 50% Glycerol |
| Preservative | 0.02% Sodium azide |
| Storage | Store as concentrated solution. Centrifuge briefly prior to opening vial. For short-term storage (1-2 weeks), store at 4°C. For long-term storage, aliquot and store at -20°C or below. Avoid multiple freeze-thaw cycles. |
| Concentration | 1 mg/ml (Please refer to the vial label for the specific concentration.) |
| Immunogen | Peptide sequence around aa. 181~185/170~174 (L-R-T-S-C) derived from human AMPK alpha 1/2. |
| Purification | Purified by antigen-affinity chromatography. |
| Conjugation | Unconjugated |

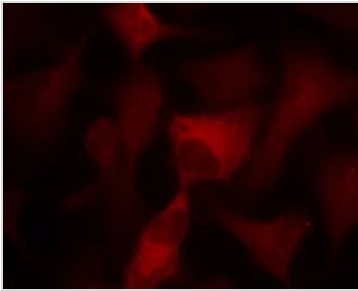
Note

For laboratory research use only. Not for any clinical, therapeutic, or diagnostic use in humans or animals. Not for animal or human consumption.

Purchasers shall not, and agree not to enable third parties to, analyze, copy, reverse engineer or otherwise attempt to determine the structure or sequence of the product.

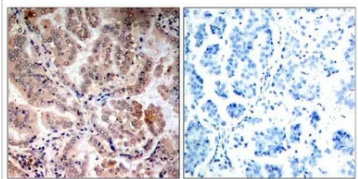
For full product information, images and publications, please visit our [website](#).

DATA IMAGES



GTX50863 ICC/IF Image

ICC/IF analysis of methanol-fixed HeLa cells using GTX50863 AMPK alpha 1/2 antibody.

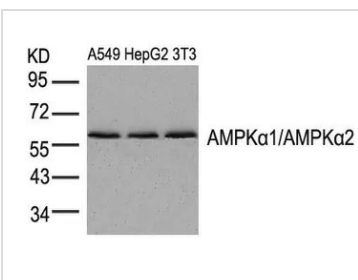


GTX50863 IHC-P Image

IHC-P analysis of human breast carcinoma tissue using GTX50863 AMPK alpha 1/2 antibody.

Left : Primary antibody

Right : Primary antibody pre-incubated with the antigen specific peptide



GTX50863 WB Image

WB analysis of extracts from A549, HepG2, and 3T3 cells using GTX50863 AMPK alpha 1/2 antibody.



For full product information, images and publications, please visit our [website](#).