

PAK1 (phospho Thr423) / PAK2 (phospho Thr402) / PAK3 (phospho Thr436) antibody

Cat. No. GTX50867

Host	Rabbit
Clonality	Polyclonal
Isotype	IgG
Applications	ICC/IF, IHC-P
Reactivity	Human

Package

100 µl

Applications

Application Note

*Optimal dilutions/concentrations should be determined by the researcher.

Suggested dilution	Recommended dilution
ICC/IF	1:100-1:200
IHC-P	1:50-1:100

Not tested in other applications.

Product Note

This antibody is raised against PAK1 phosphorylated at Thr423. Based on sequence homology, it is predicted to react with PAK2 and PAK3 when phosphorylated at the corresponding residues - Thr402/Thr436.

Properties

Form	Liquid
Buffer	PBS, 150mM NaCl, 50% Glycerol
Preservative	0.02% Sodium azide
Storage	Store as concentrated solution. Centrifuge briefly prior to opening vial. For short-term storage (1-2 weeks), store at 4°C. For long-term storage, aliquot and store at -20°C or below. Avoid multiple freeze-thaw cycles.
Concentration	1 mg/ml (Please refer to the vial label for the specific concentration.)
Immunogen	Peptide sequence around phosphorylation site of threonine 423/402/421 (R-S-T(p)-M-V) derived from human PAK1 / PAK2 / PAK3.
Purification	Purified by antigen-affinity chromatography. Non-phospho specific antibodies were removed by chromatography using non-phosphopeptide.
Conjugation	Unconjugated



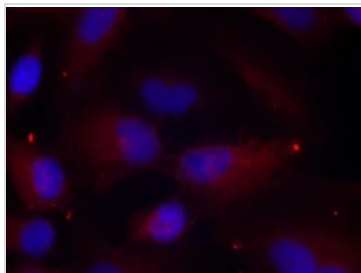
For full product information, images and publications, please visit our [website](#).

Date 2026 / 01 / 07 Page 1 of 2

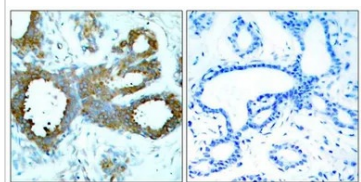
For laboratory research use only. Not for any clinical, therapeutic, or diagnostic use in humans or animals. Not for animal or human consumption.

Note

Purchasers shall not, and agree not to enable third parties to, analyze, copy, reverse engineer or otherwise attempt to determine the structure or sequence of the product.

DATA IMAGES

GTX50867 ICC/IF Image

ICC/IF analysis of methanol-fixed HeLa cells using GTX50867 PAK1 (phospho Thr423) / PAK2 (phospho Thr402) / PAK3 (phospho Thr436) antibody.


GTX50867 IHC-P Image

IHC-P analysis of human breast carcinoma tissue using GTX50867 PAK1 (phospho Thr423) / PAK2 (phospho Thr402) / PAK3 (phospho Thr436) antibody.

Left : Primary antibody

Right : Primary antibody pre-incubated with the antigen specific peptide



For full product information, images and publications, please visit our [website](#).