

AKT (phospho Tyr315) antibody

Cat. No. GTX50869

Host	Rabbit
Clonality	Polyclonal
Isotype	IgG
Applications	WB, ICC/IF, IHC-P
Reactivity	Human, Mouse

Package
100 µl

Applications

Application Note

*Optimal dilutions/concentrations should be determined by the researcher.

Suggested dilution	Recommended dilution
WB	1:500-1:1000
ICC/IF	1:100-1:200
IHC-P	1:50-1:100

Not tested in other applications.

Product Note The antibody detects endogenous level of AKT1/AKT2/AKT3 only when phosphorylated at tyrosine 315/316/312.

Properties

Form	Liquid
Buffer	PBS, 150mM NaCl, 50% Glycerol
Preservative	0.02% Sodium azide
Storage	Store as concentrated solution. Centrifuge briefly prior to opening vial. For short-term storage (1-2 weeks), store at 4°C. For long-term storage, aliquot and store at -20°C or below. Avoid multiple freeze-thaw cycles.
Concentration	1 mg/ml (Please refer to the vial label for the specific concentration.)
Immunogen	Peptide sequence around phosphorylation site of tyrosine 315/316/312 (P-E-Y(p)-L-A) derived from Human AKT1/AKT2/AKT3.
Purification	Purified by antigen-affinity chromatography. Non-phospho specific antibodies were removed by chromatography using non-phosphopeptide.
Conjugation	Unconjugated

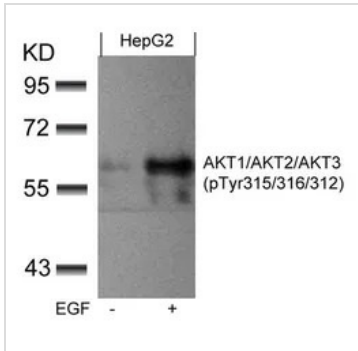


For full product information, images and publications, please visit our [website](#).

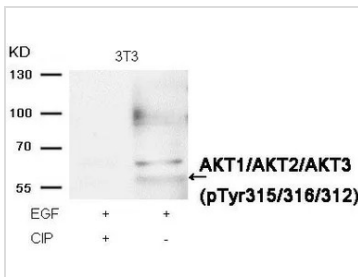
For laboratory research use only. Not for any clinical, therapeutic, or diagnostic use in humans or animals. Not for animal or human consumption.

Note

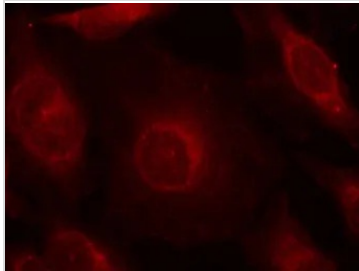
Purchasers shall not, and agree not to enable third parties to, analyze, copy, reverse engineer or otherwise attempt to determine the structure or sequence of the product.

DATA IMAGES

GTx50869 WB Image

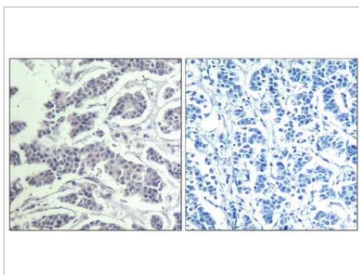
WB analysis of extracts from HepG2 cells untreated or treated with EGF using GTx50869 AKT (phospho Tyr315) antibody.


GTx50869 WB Image

WB analysis of extracts from 3T3 cells treated with EGF or calf intestinal phosphatase (CIP) using GTx50869 AKT (phospho Tyr315) antibody.


GTx50869 ICC/IF Image

ICC/IF analysis of methanol-fixed HeLa cells using GTx50869 AKT (phospho Tyr315) antibody.


GTx50869 IHC-P Image

IHC-P analysis of human breast carcinoma tissue using GTx50869 AKT (phospho Tyr315) antibody.

Left : Primary antibody

Right : Primary antibody pre-incubated with the antigen specific peptide



For full product information, images and publications, please visit our [website](https://www.genetex.com).