

Rad9 (phospho Ser387) antibody

Cat. No. GTX50884

Host	Rabbit
Clonality	Polyclonal
Isotype	IgG
Applications	WB, ICC/IF, IHC-P
Reactivity	Human

Package
400 µl

Applications

Application Note

*Optimal dilutions/concentrations should be determined by the researcher.

Suggested dilution	Recommended dilution
WB	1:1000
ICC/IF	1:10-1:50
IHC-P	1:10-1:50

Not tested in other applications.

Calculated MW 43 kDa. ([Note](#))

Properties

Form	Liquid
Buffer	PBS
Preservative	0.09% Sodium azide
Storage	Store as concentrated solution. Centrifuge briefly prior to opening vial. For short-term storage (1-2 weeks), store at 4°C. For long-term storage, aliquot and store at -20°C or below. Avoid multiple freeze-thaw cycles.
Concentration	Batch dependent (Please refer to the vial label for the specific concentration.)
Immunogen	KLH conjugated synthetic peptide between 365-391 amino acids from human Rad9.
Purification	Protein A purified, followed by peptide affinity purification.
Conjugation	Unconjugated

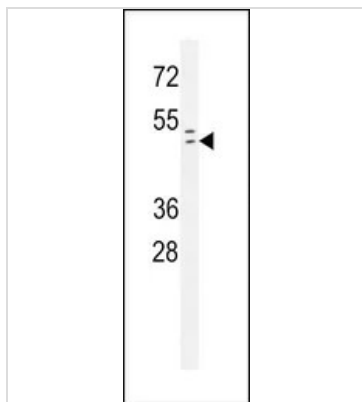
Note

For laboratory research use only. Not for any clinical, therapeutic, or diagnostic use in humans or animals. Not for animal or human consumption.

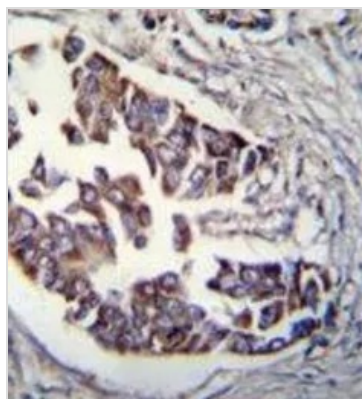
Purchasers shall not, and agree not to enable third parties to, analyze, copy, reverse engineer or otherwise attempt to determine the structure or sequence of the product.



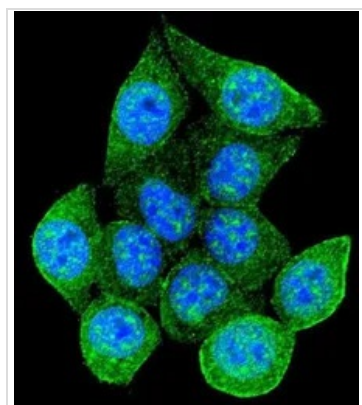
For full product information, images and publications, please visit our [website](#).

DATA IMAGES

GTX50884 WB Image

WB analysis of 293 cell lysate (35ug/lane) using GTX50884 Rad9 (phospho Ser387) antibody.


GTX50884 IHC-P Image

IHC-P analysis of human breast carcinoma using GTX50884 Rad9 (phospho Ser387) antibody.


GTX50884 ICC/IF Image

ICC/IF analysis of 293 cells using GTX50884 Rad9 (phospho Ser387) antibody.

Green : Rad9 (phospho Ser387)

Blue : DAPI



For full product information, images and publications, please visit our [website](https://www.genetex.com).