

Glutaminase (KGA) antibody, C-term

Cat. No. GTX50891

Host	Rabbit
Clonality	Polyclonal
Isotype	IgG
Applications	WB
Reactivity	Human, Rat, Pig

Package

50 µg

Applications

Application Note

*Optimal dilutions/concentrations should be determined by the researcher.

Suggested dilution	Recommended dilution
WB	0.2-2.5 ug/ml

Not tested in other applications.

Calculated MW 73 kDa. ([Note](#))

Product Note Specific for KGA but not GAC isoform

Properties

Form	Liquid
Buffer	PBS, 2% Sucrose
Preservative	0.09% Sodium azide
Storage	Store as concentrated solution. Centrifuge briefly prior to opening vial. For short-term storage (1-2 weeks), store at 4°C. For long-term storage, aliquot and store at -20°C or below. Avoid multiple freeze-thaw cycles.
Concentration	0.5-1 mg/ml (Please refer to the vial label for the specific concentration.)
Immunogen	A synthetic peptide corresponding to a C-terminal region of Human GLS
Purification	Affinity Purified
Conjugation	Unconjugated

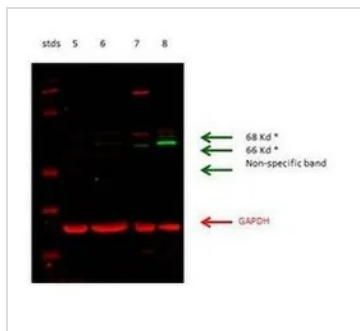
Note

For laboratory research use only. Not for any clinical, therapeutic, or diagnostic use in humans or animals. Not for animal or human consumption.

Purchasers shall not, and agree not to enable third parties to, analyze, copy, reverse engineer or otherwise attempt to determine the structure or sequence of the product.



For full product information, images and publications, please visit our [website](#).

DATA IMAGES

GTx50891 WB Image

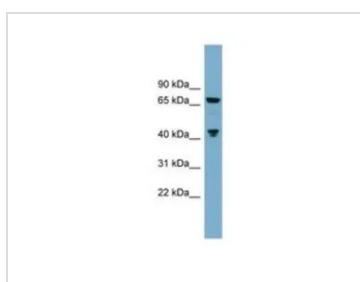
WB analysis of rat kidney cortex, kidney proximal tubules from cortex, rat brain tissue, and pig LLCPK1-F cells using GTx50891 GLS antibody at 1:2000.

Lane 5 : rat kidney cortex

Lane 6 : rat kidney proximal tubules from cortex

Lane 7 : pig LLCPK1-F cells

Lane 8 : rat brain


GTx50891 WB Image

WB analysis of ACHN cells using GTx50891 GLS antibody at 0.2-1 µg/ml.



For full product information, images and publications, please visit our [website](https://www.genetex.com).