

eNOS antibody

Cat. No. GTX50892

Host	Rabbit
Clonality	Polyclonal
Isotype	IgG
Applications	WB, IHC-P, IHC-Fr
Reactivity	Human, Mouse, Rat, Drosophila, Bovine, Dog, Pig

Package
50 µl

Applications
Application Note

*Optimal dilutions/concentrations should be determined by the researcher.

Suggested dilution	Recommended dilution
WB	1:1000
IHC-P	1:100
IHC-Fr	1:100

Not tested in other applications.

Product Note This does not detect human inducible NOS or rat brain NOS.

Properties

Form	Liquid
Buffer	PBS, 0.1% BSA
Preservative	0.05% Sodium azide
Storage	Store as concentrated solution. Centrifuge briefly prior to opening vial. For short-term storage (1-2 weeks), store at 4°C. For long-term storage, aliquot and store at -20°C or below. Avoid multiple freeze-thaw cycles.
Concentration	0.2 mg/ml (Please refer to the vial label for the specific concentration.)
Immunogen	Synthetic peptide corresponding to residues S(1179) L Q E R Q L R G A V P W A F D(1194) of human eNOS.
Purification	Purified by antigen-affinity chromatography
Conjugation	Unconjugated

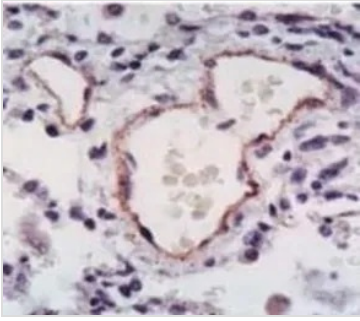
Note For laboratory research use only. Not for any clinical, therapeutic, or diagnostic use in humans or animals. Not for animal or human consumption.

Purchasers shall not, and agree not to enable third parties to, analyze, copy, reverse engineer or otherwise attempt to determine the structure or sequence of the product.



For full product information, images and publications, please visit our [website](#).

DATA IMAGES

**GTX50892 IHC-P Image**

IHC-P analysis of human lung tissue using GTX50892 eNOS antibody.



For full product information, images and publications, please visit our [website](#).