

Histone H3K4me1 (Mono-methyl Lys4) antibody [MAB10302]

Cat. No. GTX50902

Host	Mouse
Clonality	Monoclonal
Isotype	IgG2b
Applications	WB, ICC/IF, Dot, ELISA, ChIP assay
Reactivity	Human

References (1)

Package

100 µl

Applications

Application Note

*Optimal dilutions/concentrations should be determined by the researcher.

Suggested dilution	Recommended dilution
WB	1:500-1:2000
ICC/IF	Assay dependent
Dot	Assay dependent
ELISA	Assay dependent
ChIP assay	10 µl

Not tested in other applications.

Properties

Form	Liquid
Buffer	PBS
Preservative	0.05% Sodium azide
Storage	Store as concentrated solution. Centrifuge briefly prior to opening vial. For short-term storage (1-2 weeks), store at 4°C. For long-term storage, aliquot and store at -20°C or below. Avoid multiple freeze-thaw cycles.
Concentration	1 mg/ml (Please refer to the vial label for the specific concentration.)
Immunogen	13 amino acid residues from the N-terminus of human Histone H3.1
Purification	Protein A purified
Conjugation	Unconjugated

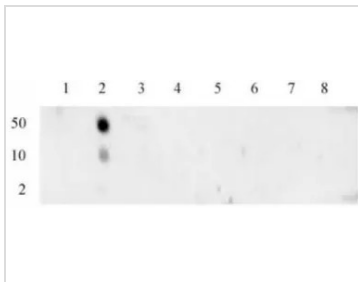
Note

For laboratory research use only. Not for any clinical, therapeutic, or diagnostic use in humans or animals. Not for animal or human consumption.

Purchasers shall not, and agree not to enable third parties to, analyze, copy, reverse engineer or otherwise attempt to determine the structure or sequence of the product.

For full product information, images and publications, please visit our [website](#).

DATA IMAGES



GTX50902 Dot Image

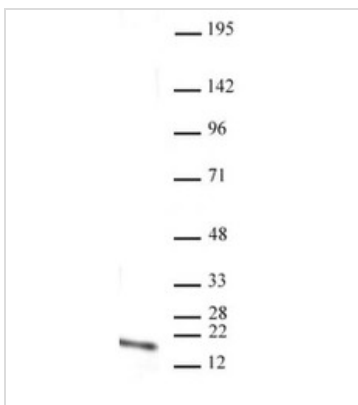
Dot Blot analysis of various peptides using GTX50902 Histone H3K4me1 (Mono-methyl Lys4) antibody [MAB10302].

Lane 1 : unmodified peptide

Lane 2 : Monomethyl Lys4

Lane 3-8 : various negative control peptides

Dilution : 1 µg/ml



GTX50902 WB Image

WB analysis of HeLa acid extract using GTX50902 Histone H3K4me1 (Mono-methyl Lys4) antibody [MAB10302].

Dilution : 2 µg/ml



For full product information, images and publications, please visit our [website](https://www.genetex.com).