

DRP1 antibody

Cat. No. GTX50968

Host	Rabbit
Clonality	Polyclonal
Isotype	IgG
Applications	WB, ICC/IF, IHC-P, IP
Reactivity	Human, Mouse, Rat, Hamster, Primate

Package
100 µl

Applications

Application Note

*Optimal dilutions/concentrations should be determined by the researcher.

Suggested dilution	Recommended dilution
WB	1:500
ICC/IF	1:50 - 1:400
IHC-P	2.5 µg/ml
IP	Assay dependent

Not tested in other applications.

Properties

Form	Liquid
Buffer	Tris-Glycine, 0.15M NaCl, 0.05% Sodium Azide
Storage	Store as concentrated solution. Centrifuge briefly prior to opening vial. For short-term storage (1-2 weeks), store at 4°C. For long-term storage, aliquot and store at -20°C or below. Avoid multiple freeze-thaw cycles.
Concentration	1 mg/ml (Please refer to the vial label for the specific concentration.)
Immunogen	A synthetic peptide made to an N-terminal region within residues 1-100 of the human DRP1 protein. [Swiss-Prot# O00429]
Purification	Purified by antigen-affinity chromatography
Conjugation	Unconjugated

Note

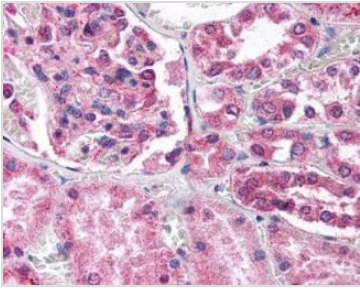
For laboratory research use only. Not for any clinical, therapeutic, or diagnostic use in humans or animals. Not for animal or human consumption.

Purchasers shall not, and agree not to enable third parties to, analyze, copy, reverse engineer or otherwise attempt to determine the structure or sequence of the product.



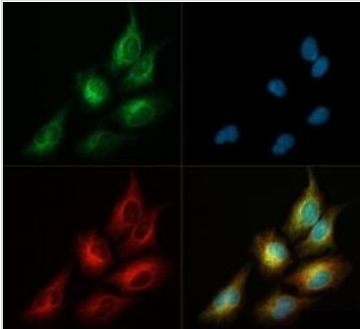
For full product information, images and publications, please visit our [website](#).

DATA IMAGES



GTX50968 IHC-P Image

IHC-P analysis of human kidney tissue using GTX50968 DRP1 antibody.



GTX50968 ICC/IF Image

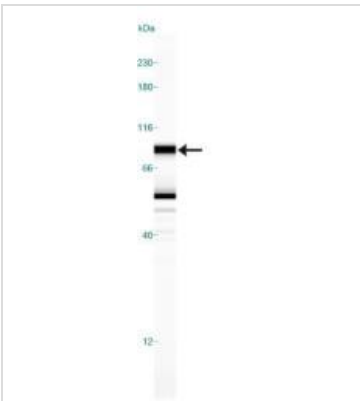
ICC/IF analysis of HeLa cells using GTX50968 DRP1 antibody.

Green : primary antibody

Red : Tubulin

Blue : DAPI

Dilution : 1:50



GTX50968 WB Image

WB analysis of human brain tissue lysate using GTX50968 DRP1 antibody.



For full product information, images and publications, please visit our [website](https://www.genetex.com).