

## GPR125 antibody

Cat. No. GTX51219

<b>Host</b>	Rabbit
<b>Clonality</b>	Polyclonal
<b>Isotype</b>	IgG
<b>Applications</b>	WB, ICC/IF, FCM
<b>Reactivity</b>	Human, Mouse

References ( 2 )

Package

100 µl

## Applications

## Application Note

\*Optimal dilutions/concentrations should be determined by the researcher.

Suggested dilution	Recommended dilution
WB	Assay dependent
ICC/IF	Assay dependent
FCM	1:20-100

Not tested in other applications.

**Calculated MW** 146 kDa. ([Note](#))

## Properties

<b>Form</b>	Liquid
<b>Buffer</b>	1% BSA, 50% Glycerol
<b>Preservative</b>	0.09% Sodium azide
<b>Storage</b>	Store as concentrated solution. Centrifuge briefly prior to opening vial. For short-term storage (1-2 weeks), store at 4°C. For long-term storage, aliquot and store at -20°C or below. Avoid multiple freeze-thaw cycles.
<b>Concentration</b>	1 mg/ml (Please refer to the vial label for the specific concentration.)
<b>Immunogen</b>	KLH conjugated synthetic peptide derived from human GPR125.
<b>Purification</b>	Protein A purified
<b>Conjugation</b>	Unconjugated

## Note

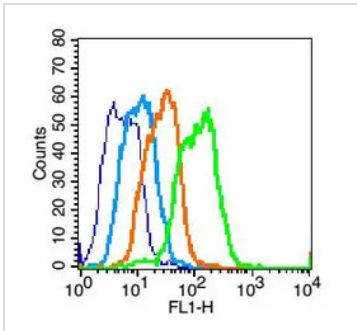
For laboratory research use only. Not for any clinical, therapeutic, or diagnostic use in humans or animals. Not for animal or human consumption.

Purchasers shall not, and agree not to enable third parties to, analyze, copy, reverse engineer or otherwise attempt to determine the structure or sequence of the product.



For full product information, images and publications, please visit our [website](#).

## DATA IMAGES

**GTX51219 FCM Image**

FACS analysis of mouse colon cells using GTX51219 GPR125 antibody.

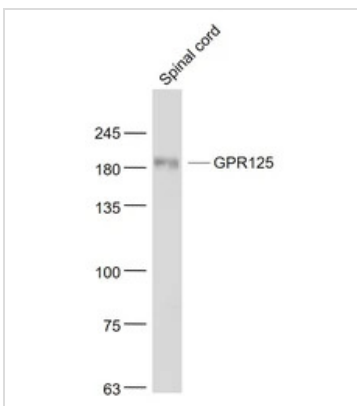
Green : Primary antibody

Blue : Unstained cells

Orange : Isotype control

Light blue : Secondary antibody only

Antibody amount : 3 $\mu$ g

**GTX51219 WB Image**

WB analysis of mouse spinal cord tissue lysate using GTX51219 GPR125 antibody.

Dilution : 1:1000



For full product information, images and publications, please visit our [website](#).