

# GRINA antibody

**Cat. No. GTX51232**

<b>Host</b>	Rabbit
<b>Clonality</b>	Polyclonal
<b>Isotype</b>	IgG
<b>Application</b>	IHC-P
<b>Reactivity</b>	Rat

**Package**  
100 µl

## APPLICATION

### Application Note

\*Optimal dilutions/concentrations should be determined by the researcher.

Suggested dilution	Recommended dilution
IHC-P	1:50-400
Not tested in other applications.	

**Calculated MW** 41 kDa. ( [Note](#) )

## PROPERTIES

<b>Form</b>	Liquid
<b>Buffer</b>	1% BSA, 50% Glycerol
<b>Preservative</b>	0.09% Sodium azide
<b>Storage</b>	Store as concentrated solution. Centrifuge briefly prior to opening vial. For short-term storage (1-2 weeks), store at 4°C. For long-term storage, aliquot and store at -20°C or below. Avoid multiple freeze-thaw cycles.
<b>Concentration</b>	1 mg/ml (Please refer to the vial label for the specific concentration.)
<b>Immunogen</b>	KLH conjugated synthetic peptide derived from human GRINA(140-190).
<b>Purification</b>	Protein A purified
<b>Conjugation</b>	Unconjugated

### Note

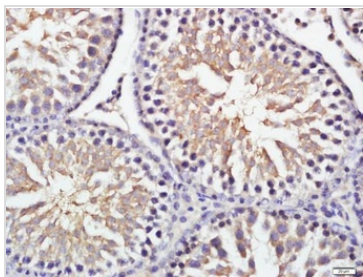
For laboratory research use only. Not for any clinical, therapeutic, or diagnostic use in humans or animals. Not for animal or human consumption.

Purchasers shall not, and agree not to enable third parties to, analyze, copy, reverse engineer or otherwise attempt to determine the structure or sequence of the product.



For full product information, images and publications, please visit our [website](#).

## DATA IMAGES



### GTX51232 IHC-P Image

IHC-P analysis of rat testis tissue using GTX51232 GRINA antibody.

Antigen retrieval : Boiling in sodium citrate buffer (pH6) for 15min

Dilution : 1:200



For full product information, images and publications, please visit our [website](#).