

## BAMBI antibody

Cat. No. GTX51308

<b>Host</b>	Rabbit
<b>Clonality</b>	Polyclonal
<b>Isotype</b>	IgG
<b>Applications</b>	WB, ICC/IF, IHC-P, FCM
<b>Reactivity</b>	Human, Mouse, Rat, Pig

Package  
100 µl

## Applications

## Application Note

\*Optimal dilutions/concentrations should be determined by the researcher.

Suggested dilution	Recommended dilution
WB	1:300-1000
ICC/IF	Assay dependent
IHC-P	1:50-400
FCM	1:20-100

Not tested in other applications.

**Calculated MW** 29 kDa. ([Note](#))

## Properties

<b>Form</b>	Liquid
<b>Buffer</b>	1% BSA, 50% Glycerol
<b>Preservative</b>	0.09% Sodium azide
<b>Storage</b>	Store as concentrated solution. Centrifuge briefly prior to opening vial. For short-term storage (1-2 weeks), store at 4°C. For long-term storage, aliquot and store at -20°C or below. Avoid multiple freeze-thaw cycles.
<b>Concentration</b>	1 mg/ml (Please refer to the vial label for the specific concentration.)
<b>Immunogen</b>	KLH conjugated synthetic peptide derived from human BAMBI(100-150).
<b>Purification</b>	Protein A purified
<b>Conjugation</b>	Unconjugated

## Note

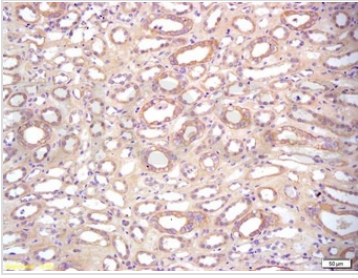
For laboratory research use only. Not for any clinical, therapeutic, or diagnostic use in humans or animals. Not for animal or human consumption.

Purchasers shall not, and agree not to enable third parties to, analyze, copy, reverse engineer or otherwise attempt to determine the structure or sequence of the product.



For full product information, images and publications, please visit our [website](#).

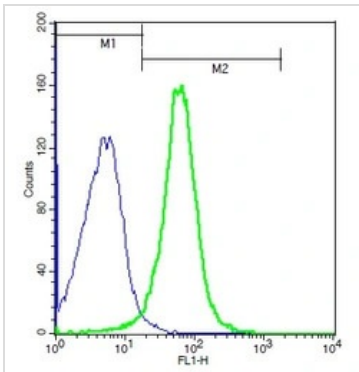
## DATA IMAGES

**GTX51308 IHC-P Image**

IHC-P analysis of human kidney tissue using GTX51308 BAMBI antibody.

Antigen retrieval : Boiling in sodium citrate buffer (pH6) for 15min

Dilution : 1:200

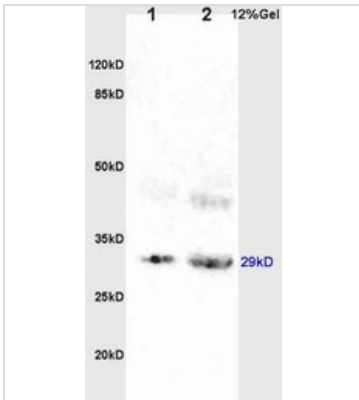
**GTX51308 FCM Image**

FACS analysis of mouse splenocytes using GTX51308 BAMBI antibody.

Green : Primary antibody

Blue : Unstained cells

Dilution : 1:100

**GTX51308 WB Image**

WB analysis of various samples using GTX51308 BAMBI antibody.

Dilution : 1:200

Lane 1 : rat brain lysates

Lane 2 : rat kidney lysates



For full product information, images and publications, please visit our [website](#).