

FHOD1 antibody

Cat. No. GTX51345

Host	Rabbit
Clonality	Polyclonal
Isotype	IgG
Applications	WB, IHC-P
Reactivity	Human, Mouse, Rat

References (1)

Package

100 µl

Applications

Application Note

*Optimal dilutions/concentrations should be determined by the researcher.

Suggested dilution	Recommended dilution
WB	1:300-1000
IHC-P	1:50-400

Not tested in other applications.

Calculated MW 127 kDa. ([Note](#))

Properties

Form	Liquid
Buffer	1% BSA, 50% Glycerol
Preservative	0.09% Sodium azide
Storage	Store as concentrated solution. Centrifuge briefly prior to opening vial. For short-term storage (1-2 weeks), store at 4°C. For long-term storage, aliquot and store at -20°C or below. Avoid multiple freeze-thaw cycles.
Concentration	1 mg/ml (Please refer to the vial label for the specific concentration.)
Immunogen	KLH conjugated synthetic peptide derived from human FHOD1(600-635).
Purification	Protein A purified
Conjugation	Unconjugated

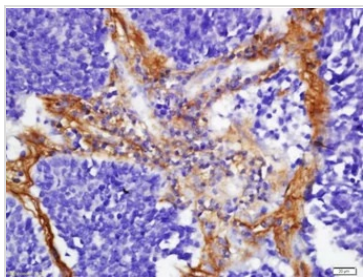
Note

For laboratory research use only. Not for any clinical, therapeutic, or diagnostic use in humans or animals. Not for animal or human consumption.

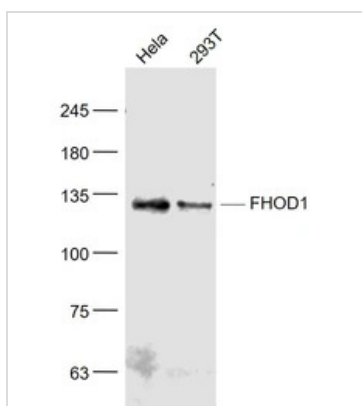
Purchasers shall not, and agree not to enable third parties to, analyze, copy, reverse engineer or otherwise attempt to determine the structure or sequence of the product.

For full product information, images and publications, please visit our [website](#).

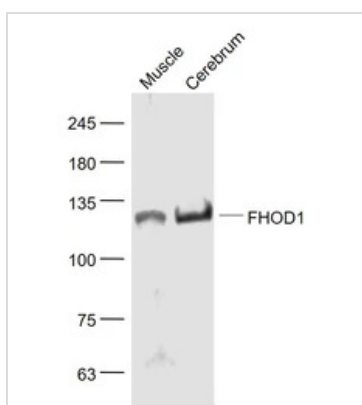
DATA IMAGES

**GTX51345 IHC-P Image**

IHC-P analysis of human lung carcinoma tissue using GTX51345 FHOD1 antibody.
Dilution : 1:200

**GTX51345 WB Image**

WB analysis of various samples using GTX51345 FHOD1 antibody.
Dilution : 1:1000
Lane 1 : HeLa cell lysates
Lane 2 : 293T cell lysates

**GTX51345 WB Image**

WB analysis of various samples using GTX51345 FHOD1 antibody.
Dilution : 1:1000
Lane 1 : Mouse muscle lysates
Lane 2 : Rat Cerebrum lysates



For full product information, images and publications, please visit our [website](#).