

NFAM1 antibody

Cat. No. GTX51546

Host	Rabbit
Clonality	Polyclonal
Isotype	IgG
Applications	WB, IHC-P, FCM, ELISA
Reactivity	Human, Mouse, Rat

Package
100 µl

Applications

Application Note

*Optimal dilutions/concentrations should be determined by the researcher.

Suggested dilution	Recommended dilution
WB	Assay dependent
IHC-P	1:50-400
FCM	1:20-100
ELISA	Assay dependent

Not tested in other applications.

Calculated MW 30 kDa. ([Note](#))

Properties

Form	Liquid
Buffer	1% BSA, 50% Glycerol
Preservative	0.09% Sodium azide
Storage	Store as concentrated solution. Centrifuge briefly prior to opening vial. For short-term storage (1-2 weeks), store at 4°C. For long-term storage, aliquot and store at -20°C or below. Avoid multiple freeze-thaw cycles.
Concentration	1 mg/ml (Please refer to the vial label for the specific concentration.)
Immunogen	KLH conjugated synthetic peptide derived from human NFAM1(100-150).
Purification	Protein A purified
Conjugation	Unconjugated

Note

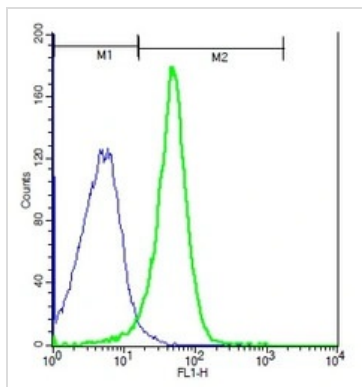
For laboratory research use only. Not for any clinical, therapeutic, or diagnostic use in humans or animals. Not for animal or human consumption.

Purchasers shall not, and agree not to enable third parties to, analyze, copy, reverse engineer or otherwise attempt to determine the structure or sequence of the product.



For full product information, images and publications, please visit our [website](#).

DATA IMAGES



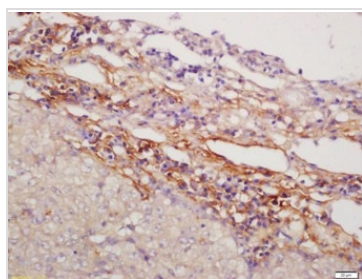
GTX51546 FCM Image

FACS analysis of mouse splenocytes using GTX51546 NFAM1 antibody.

Green : Primary antibody

Blue : Unstained cells

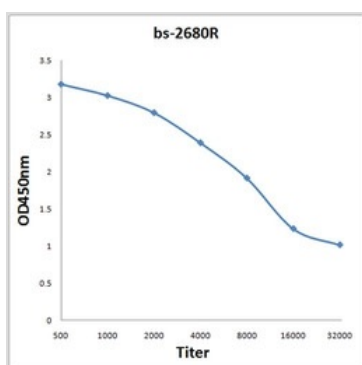
Dilution : 1:100



GTX51546 IHC-P Image

IHC-P analysis of human lung carcinoma tissue using GTX51546 NFAM1 antibody.

Dilution : 1:200



GTX51546 ELISA Image

ELISA analysis of 0.2μg GTX51546 antigen in 100μl buffer using serial diluted GTX51546 NFAM1 antibody.



For full product information, images and publications, please visit our [website](https://www.genetex.com).