

## TORC2 (phospho Ser171) antibody

**Cat. No. GTX51565**

<b>Host</b>	Rabbit
<b>Clonality</b>	Polyclonal
<b>Isotype</b>	IgG
<b>Applications</b>	WB, IHC-P
<b>Reactivity</b>	Human, Mouse, Rat

References ( 1 )

Package

100 µl

## Applications

**Application Note**

\*Optimal dilutions/concentrations should be determined by the researcher.

Suggested dilution	Recommended dilution
WB	1:300-1000
IHC-P	1:50-400

Not tested in other applications.

**Calculated MW** 73 kDa. ( [Note](#) )

## Properties

<b>Form</b>	Liquid
<b>Buffer</b>	1% BSA, 50% Glycerol
<b>Preservative</b>	0.09% Sodium azide
<b>Storage</b>	Store as concentrated solution. Centrifuge briefly prior to opening vial. For short-term storage (1-2 weeks), store at 4°C. For long-term storage, aliquot and store at -20°C or below. Avoid multiple freeze-thaw cycles.
<b>Concentration</b>	1 mg/ml (Please refer to the vial label for the specific concentration.)
<b>Immunogen</b>	KLH conjugated synthetic phosphopeptide derived from human TORC2 around the phosphorylation site of Ser171
<b>Purification</b>	Protein A purified
<b>Conjugation</b>	Unconjugated

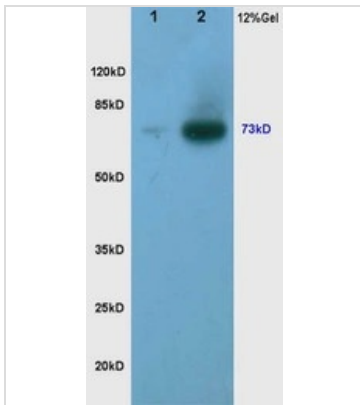
**Note**

For laboratory research use only. Not for any clinical, therapeutic, or diagnostic use in humans or animals. Not for animal or human consumption.

Purchasers shall not, and agree not to enable third parties to, analyze, copy, reverse engineer or otherwise attempt to determine the structure or sequence of the product.

For full product information, images and publications, please visit our [website](#).

DATA IMAGES



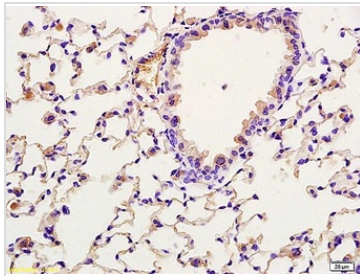
**GTX51565 WB Image**

WB analysis of various samples using GTX51565 TORC2 (phospho Ser171) antibody.

Dilution : 1:200

Lane 1 : human rectal carcinoma lysates

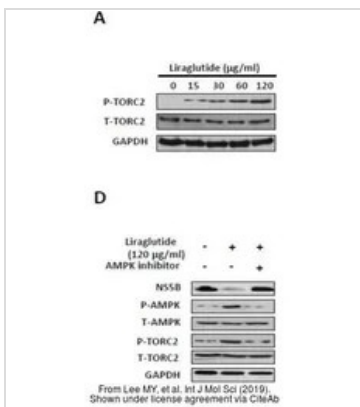
Lane 2 : human gastric carcinoma lysates



**GTX51565 IHC-P Image**

IHC-P analysis of rat lung tissue using GTX51565 TORC2 (phospho Ser171) antibody.

Dilution : 1:200



**GTX51565 WB Image**

The data was published in the journal Int J Mol Sci in 2019. [PMID: 31540136](https://pubmed.ncbi.nlm.nih.gov/31540136/)



For full product information, images and publications, please visit our [website](#).