

ASAP1 antibody

Cat. No. GTX51586

Host	Rabbit
Clonality	Polyclonal
Isotype	IgG
Applications	WB, IHC-P
Reactivity	Human, Mouse

Package
100 µl

Applications

Application Note

*Optimal dilutions/concentrations should be determined by the researcher.

Suggested dilution	Recommended dilution
WB	1:300-1000
IHC-P	1:50-400

Not tested in other applications.

Calculated MW 125 kDa. ([Note](#))

Properties

Form	Liquid
Buffer	1% BSA, 50% Glycerol
Preservative	0.09% Sodium azide
Storage	Store as concentrated solution. Centrifuge briefly prior to opening vial. For short-term storage (1-2 weeks), store at 4°C. For long-term storage, aliquot and store at -20°C or below. Avoid multiple freeze-thaw cycles.
Concentration	1 mg/ml (Please refer to the vial label for the specific concentration.)
Immunogen	KLH conjugated synthetic peptide derived from human ASAP1.
Purification	Protein A purified
Conjugation	Unconjugated

Note

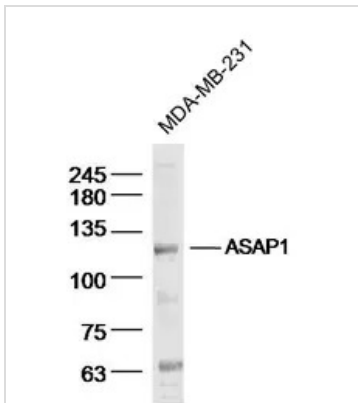
For laboratory research use only. Not for any clinical, therapeutic, or diagnostic use in humans or animals. Not for animal or human consumption.

Purchasers shall not, and agree not to enable third parties to, analyze, copy, reverse engineer or otherwise attempt to determine the structure or sequence of the product.



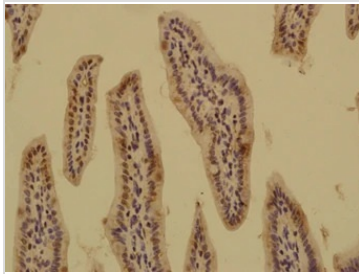
For full product information, images and publications, please visit our [website](#).

DATA IMAGES

**GTX51586 WB Image**

WB analysis of MDA-MB-231 cell lysate using GTX51586 ASAP1 antibody.

Dilution : 1:300

**GTX51586 IHC-P Image**

IHC-P analysis of mouse small intestine tissue using GTX51586 ASAP1 antibody.

Antigen retrieval : Boiling in sodium citrate buffer (pH6) for 15min

Dilution : 1:500



For full product information, images and publications, please visit our [website](#).