

LASS2 antibody

Cat. No. GTX51624

Host	Rabbit
Clonality	Polyclonal
Isotype	IgG
Applications	WB, IHC-P
Reactivity	Mouse, Rat

Package
100 µl

Applications

Application Note

*Optimal dilutions/concentrations should be determined by the researcher.

Suggested dilution	Recommended dilution
WB	1:300-1000
IHC-P	1:50-400

Not tested in other applications.

Calculated MW 45 kDa. ([Note](#))

Properties

Form	Liquid
Buffer	1% BSA, 50% Glycerol
Preservative	0.09% Sodium azide
Storage	Store as concentrated solution. Centrifuge briefly prior to opening vial. For short-term storage (1-2 weeks), store at 4°C. For long-term storage, aliquot and store at -20°C or below. Avoid multiple freeze-thaw cycles.
Concentration	1 mg/ml (Please refer to the vial label for the specific concentration.)
Immunogen	KLH conjugated synthetic peptide derived from human LASS2(230-261).
Purification	Protein A purified
Conjugation	Unconjugated

Note

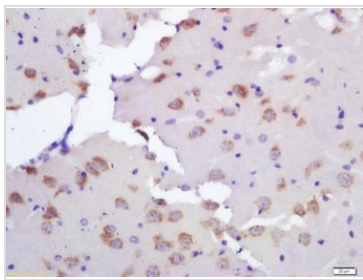
For laboratory research use only. Not for any clinical, therapeutic, or diagnostic use in humans or animals. Not for animal or human consumption.

Purchasers shall not, and agree not to enable third parties to, analyze, copy, reverse engineer or otherwise attempt to determine the structure or sequence of the product.



For full product information, images and publications, please visit our [website](#).

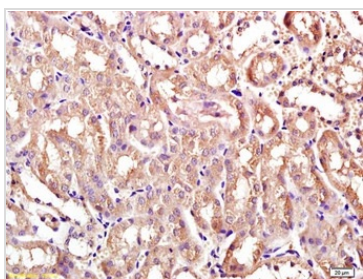
DATA IMAGES



GTX51624 IHC-P Image

IHC-P analysis of rat brain tissue using GTX51624 LASS2 antibody.

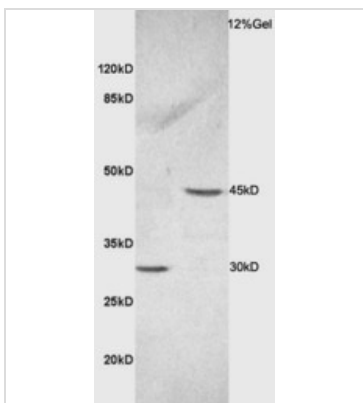
Dilution : 1:200



GTX51624 IHC-P Image

IHC-P analysis of rat kidney tissue using GTX51624 LASS2 antibody.

Dilution : 1:200



GTX51624 WB Image

WB analysis of various samples using GTX51624 LASS2 antibody.

Dilution : 1:300

Lane 1 : rat kidney lysates

Lane 2 : rat brain lysates



For full product information, images and publications, please visit our [website](#).