

CTAG2 antibody

Cat. No. GTX51753

Host	Rabbit
Clonality	Polyclonal
Isotype	IgG
Applications	WB, IHC-P
Reactivity	Human, Mouse

Package
100 µl

Applications

Application Note

*Optimal dilutions/concentrations should be determined by the researcher.

Suggested dilution	Recommended dilution
WB	1:300-1000
IHC-P	1:50-400

Not tested in other applications.

Calculated MW 21 kDa. ([Note](#))

Properties

Form	Liquid
Buffer	1% BSA, 50% Glycerol
Preservative	0.09% Sodium azide
Storage	Store as concentrated solution. Centrifuge briefly prior to opening vial. For short-term storage (1-2 weeks), store at 4°C. For long-term storage, aliquot and store at -20°C or below. Avoid multiple freeze-thaw cycles.
Concentration	1 mg/ml (Please refer to the vial label for the specific concentration.)
Immunogen	KLH conjugated synthetic peptide derived from human CTAG2(140-190).
Purification	Protein A purified
Conjugation	Unconjugated

Note

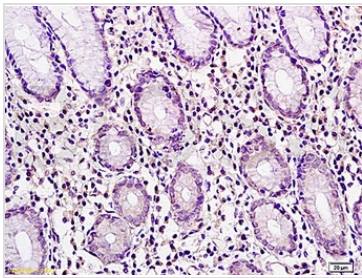
For laboratory research use only. Not for any clinical, therapeutic, or diagnostic use in humans or animals. Not for animal or human consumption.

Purchasers shall not, and agree not to enable third parties to, analyze, copy, reverse engineer or otherwise attempt to determine the structure or sequence of the product.



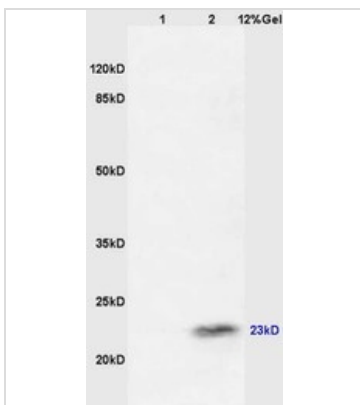
For full product information, images and publications, please visit our [website](#).

DATA IMAGES



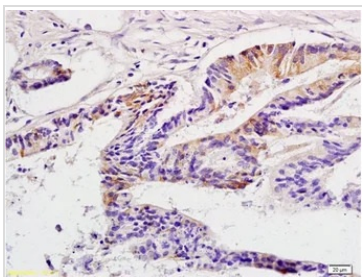
GTX51753 IHC-P Image

IHC-P analysis of human gastric carcinoma tissue using GTX51753 CTAG2 antibody.
Dilution : 1:200



GTX51753 WB Image

WB analysis of various samples using GTX51753 CTAG2 antibody.
Dilution : 1:200
Lane 1 : mouse intestine lysates
Lane 2 : mouse testis lysates



GTX51753 IHC-P Image

IHC-P analysis of human colon carcinoma tissue using GTX51753 CTAG2 antibody.
Dilution : 1:200



For full product information, images and publications, please visit our [website](#).