

ICAM4 antibody

Cat. No. GTX51807

Host	Rabbit
Clonality	Polyclonal
Isotype	IgG
Applications	WB, IHC-P, FCM
Reactivity	Human, Mouse

Package
100 µl

Applications

Application Note

*Optimal dilutions/concentrations should be determined by the researcher.

Suggested dilution	Recommended dilution
WB	1:300-1000
IHC-P	1:50-400
FCM	Assay dependent

Not tested in other applications.

Calculated MW 29 kDa. ([Note](#))

Properties

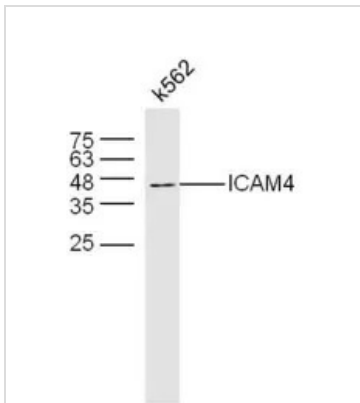
Form	Liquid
Buffer	1% BSA, 50% Glycerol
Preservative	0.09% Sodium azide
Storage	Store as concentrated solution. Centrifuge briefly prior to opening vial. For short-term storage (1-2 weeks), store at 4°C. For long-term storage, aliquot and store at -20°C or below. Avoid multiple freeze-thaw cycles.
Concentration	1 mg/ml (Please refer to the vial label for the specific concentration.)
Immunogen	KLH conjugated synthetic peptide derived from human ICAM4(75-125).
Purification	Protein A purified
Conjugation	Unconjugated

Note

For laboratory research use only. Not for any clinical, therapeutic, or diagnostic use in humans or animals. Not for animal or human consumption.

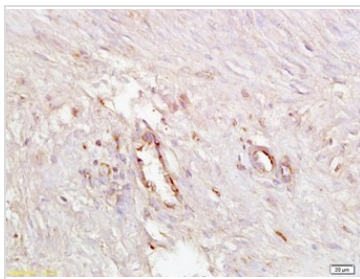
Purchasers shall not, and agree not to enable third parties to, analyze, copy, reverse engineer or otherwise attempt to determine the structure or sequence of the product.

For full product information, images and publications, please visit our [website](#).

DATA IMAGES

GTX51807 WB Image

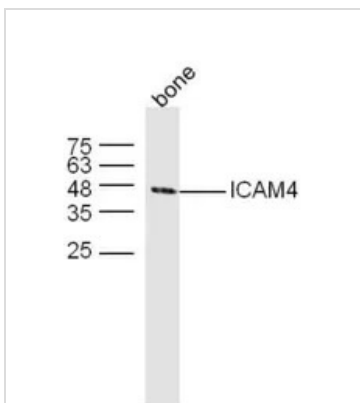
WB analysis of K562 cell lysate using GTX51807 ICAM4 antibody.

Dilution : 1:300


GTX51807 IHC-P Image

IHC-P analysis of human endometrial tissue using GTX51807 ICAM4 antibody.

Dilution : 1:200


GTX51807 WB Image

WB analysis of mouse bone tissue lysate using GTX51807 ICAM4 antibody.

Dilution : 1:300



For full product information, images and publications, please visit our [website](https://www.genetex.com).