

CNIH3 antibody

Cat. No. GTX51857

Host	Rabbit
Clonality	Polyclonal
Isotype	IgG
Applications	IHC-P
Reactivity	Rat

Package
100 µl

Applications

Application Note

*Optimal dilutions/concentrations should be determined by the researcher.

Suggested dilution	Recommended dilution
IHC-P	1:50-400

Not tested in other applications.

Product Note The immunogen shares 100% homology with human CNIH2.

Properties

Form	Liquid
Buffer	1% BSA, 50% Glycerol
Preservative	0.09% Sodium azide
Storage	Store as concentrated solution. Centrifuge briefly prior to opening vial. For short-term storage (1-2 weeks), store at 4°C. For long-term storage, aliquot and store at -20°C or below. Avoid multiple freeze-thaw cycles.
Concentration	1 mg/ml (Please refer to the vial label for the specific concentration.)
Immunogen	KLH conjugated synthetic peptide derived from human CNIH3/CNIH2.
Purification	Protein A purified
Conjugation	Unconjugated

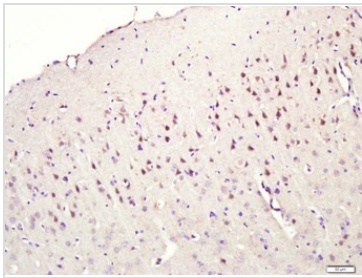
Note

For laboratory research use only. Not for any clinical, therapeutic, or diagnostic use in humans or animals. Not for animal or human consumption.

Purchasers shall not, and agree not to enable third parties to, analyze, copy, reverse engineer or otherwise attempt to determine the structure or sequence of the product.



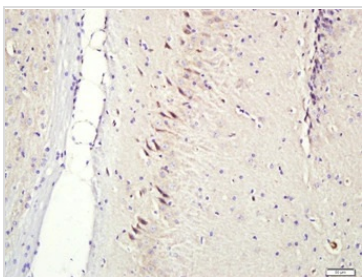
For full product information, images and publications, please visit our [website](#).

DATA IMAGES

GTX51857 IHC-P Image

IHC-P analysis of rat brain tissue using GTX51857 CNIH3 antibody.

Antigen retrieval : Boiling in sodium citrate buffer (pH6) for 15min

Dilution : 1:400


GTX51857 IHC-P Image

IHC-P analysis of rat brain tissue using GTX51857 CNIH3 antibody.

Antigen retrieval : Boiling in sodium citrate buffer (pH6) for 15min

Dilution : 1:400



For full product information, images and publications, please visit our [website](https://www.genetex.com).