

SPP24 antibody

Cat. No. GTX51998

Host	Rabbit
Clonality	Polyclonal
Isotype	IgG
Applications	IHC-P, ELISA
Reactivity	Human, Rat

Package
100 µl

Applications

Application Note

*Optimal dilutions/concentrations should be determined by the researcher.

Suggested dilution	Recommended dilution
IHC-P	1:50-400
ELISA	Assay dependent

Not tested in other applications.

Properties

Form	Liquid
Buffer	1% BSA, 50% Glycerol
Preservative	0.09% Sodium azide
Storage	Store as concentrated solution. Centrifuge briefly prior to opening vial. For short-term storage (1-2 weeks), store at 4°C. For long-term storage, aliquot and store at -20°C or below. Avoid multiple freeze-thaw cycles.
Concentration	1 mg/ml (Please refer to the vial label for the specific concentration.)
Immunogen	KLH conjugated synthetic peptide derived from human SPP24(65-100).
Purification	Protein A purified
Conjugation	Unconjugated

Note

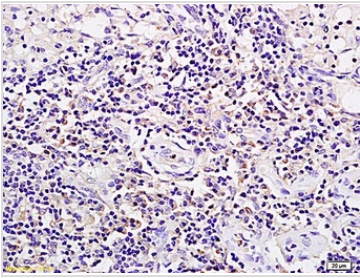
For laboratory research use only. Not for any clinical, therapeutic, or diagnostic use in humans or animals. Not for animal or human consumption.

Purchasers shall not, and agree not to enable third parties to, analyze, copy, reverse engineer or otherwise attempt to determine the structure or sequence of the product.

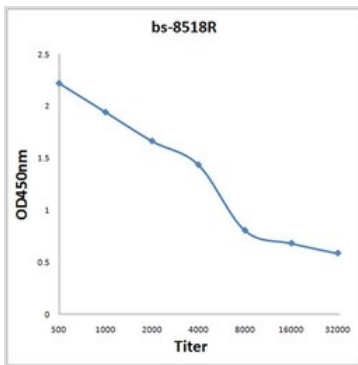


For full product information, images and publications, please visit our [website](#).

DATA IMAGES

**GTX51998 IHC-P Image**

IHC-P analysis of rat xenograft tumor tissue using GTX51998 SPP24 antibody.

**GTX51998 ELISA Image**

ELISA analysis of 2 μ g GTX51998 antigen in 100 μ l buffer using serial diluted GTX51998 SPP24 antibody.



For full product information, images and publications, please visit our [website](#).