

c-Abl (phospho Tyr412) antibody

Cat. No. GTX52311

Host	Rabbit
Clonality	Polyclonal
Isotype	IgG
Applications	WB, ICC/IF, IHC-P, IHC
Reactivity	Human, Mouse

References (1)

Package

100 µg

Applications

Application Note

WB 1:500-1:2000, IHC 1:50-1:200, IF/ICC 1:100-1:500

Calculated MW 123 kDa. ([Note](#))

Product Note

This antibody is raised against human c-Abl (isoform b) phosphorylated at Tyr412. Based on sequence homology, it is predicted to react with c-Abl (isoform a) or ABL2 when phosphorylated at the corresponding residues - c-Abl (isoform a) Tyr393 or ABL2 Tyr439.

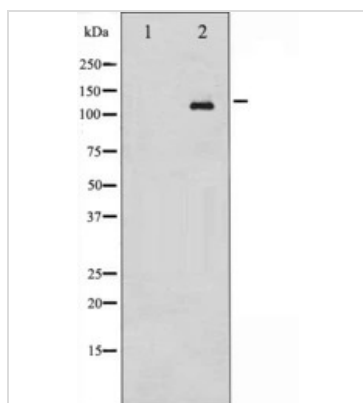
Properties

Form	Liquid
Buffer	PBS, 150mM NaCl, 50% Glycerol
Preservative	0.02% Sodium azide
Storage	Store as concentrated solution. Centrifuge briefly prior to opening vial. For short-term storage (1-2 weeks), store at 4°C. For long-term storage, aliquot and store at -20°C or below. Avoid multiple freeze-thaw cycles.
Concentration	1 mg/ml (Please refer to the vial label for the specific concentration.)
Immunogen	A synthesized peptide derived from human c-Abl around the phosphorylation site of Tyr412.
Purification	Antigen affinity purification
Conjugation	Unconjugated
Note	<p>For laboratory research use only. Not for any clinical, therapeutic, or diagnostic use in humans or animals. Not for animal or human consumption.</p> <p>Purchasers shall not, and agree not to enable third parties to, analyze, copy, reverse engineer or otherwise attempt to determine the structure or sequence of the product.</p>



For full product information, images and publications, please visit our [website](#).

DATA IMAGES



GTX52311 WB Image

Western blot analysis of Abl phosphorylation expression in RAW264.7 whole cell lysates, The lane on the left is treated with the antigen-specific peptide.



For full product information, images and publications, please visit our [website](https://www.genetex.com).