

c-Abl (phospho Tyr412) antibody

Cat. No. GTX52312

Host	Rabbit
Clonality	Polyclonal
Isotype	IgG
Applications	WB, IHC
Reactivity	Human, Mouse, Monkey

Package
100 µg

Applications

Application Note

WB 1:500-1:2000, IHC 1:50-1:200

Calculated MW	123 kDa. (Note)
Product Note	This antibody is raised against human c-Abl (isoform b) phosphorylated at Tyr412. Based on sequence homology, it is predicted to react with c-Abl (isoform a) or ABL2 when phosphorylated at the corresponding residues - c-Abl (isoform a) Tyr393 or ABL2 Tyr439.

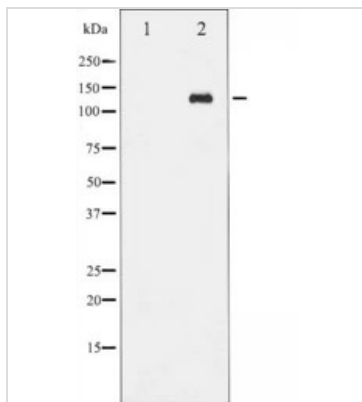
Properties

Form	Liquid
Buffer	PBS, 150mM NaCl, 50% Glycerol
Preservative	0.02% Sodium azide
Storage	Store as concentrated solution. Centrifuge briefly prior to opening vial. For short-term storage (1-2 weeks), store at 4°C. For long-term storage, aliquot and store at -20°C or below. Avoid multiple freeze-thaw cycles.
Concentration	1 mg/ml (Please refer to the vial label for the specific concentration.)
Immunogen	A synthesized peptide derived from human c-Abl around the phosphorylation site of Tyr412
Purification	Antigen affinity purification
Conjugation	Unconjugated
Note	For laboratory research use only. Not for any clinical, therapeutic, or diagnostic use in humans or animals. Not for animal or human consumption. Purchasers shall not, and agree not to enable third parties to, analyze, copy, reverse engineer or otherwise attempt to determine the structure or sequence of the product.



For full product information, images and publications, please visit our [website](#).

DATA IMAGES



GTX52312 WB Image

Western blot analysis of Abl phosphorylation expression in Adriamycin treated COS7 whole cell lysates, The lane on the left is treated with the antigen-specific peptide.



For full product information, images and publications, please visit our [website](https://www.genetex.com).