

Sodium/Potassium ATPase alpha 1 (phospho Ser23) antibody

Cat. No. GTX52314

Host	Rabbit
Clonality	Polyclonal
Isotype	IgG
Applications	WB, ICC/IF
Reactivity	Human, Mouse, Rat

Package
100 µg

Applications

Application Note

WB 1:500-1:2000, IF/ICC 1:100-1:500

Calculated MW 113 kDa. ([Note](#))**Product Note** ATP1A1

Properties

Form	Liquid
Buffer	PBS, 150mM NaCl, 50% Glycerol
Preservative	0.02% Sodium azide
Storage	Store as concentrated solution. Centrifuge briefly prior to opening vial. For short-term storage (1-2 weeks), store at 4°C. For long-term storage, aliquot and store at -20°C or below. Avoid multiple freeze-thaw cycles.
Concentration	1 mg/ml (Please refer to the vial label for the specific concentration.)
Immunogen	A synthesized peptide derived from human Sodium/Potassium ATPase alpha 1 around the phosphorylation site of Ser23
Purification	Antigen affinity purification
Conjugation	Unconjugated

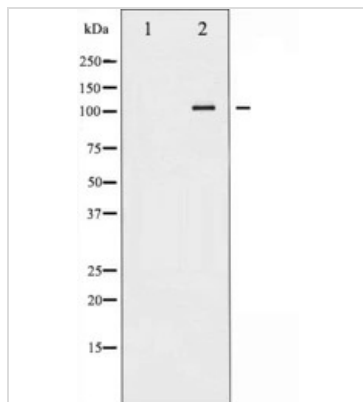
Note

For laboratory research use only. Not for any clinical, therapeutic, or diagnostic use in humans or animals. Not for animal or human consumption.

Purchasers shall not, and agree not to enable third parties to, analyze, copy, reverse engineer or otherwise attempt to determine the structure or sequence of the product.

For full product information, images and publications, please visit our [website](#).

DATA IMAGES



GTX52314 WB Image

Western blot analysis of ATP1 alpha1/Na+K+ ATPase1 phosphorylation expression in Rat brain tissue lysates. The lane on the left is treated with the antigen-specific peptide.



For full product information, images and publications, please visit our [website](#).