

# IGF1R beta (phospho Tyr1131) / Insulin Receptor beta (phospho Tyr1146) antibody

**Cat. No. GTX52315**

<b>Host</b>	Rabbit
<b>Clonality</b>	Polyclonal
<b>Isotype</b>	IgG
<b>Applications</b>	WB, IP, IHC
<b>Reactivity</b>	Human, Mouse, Rat

Package

100 µg

## Applications

### Application Note

WB 1:500-1:2000, IHC 1:50-1:200, IP

**Calculated MW** 155 kDa. ([Note](#))

**Product Note** Tyr1161 in full-length IGF-1R is equivalent to Tyr1131 in signal peptide cleaved IGF1R, and Tyr1185 in full-length Insulin Receptor is equivalent to Tyr1146 in signal peptide cleaved Insulin Receptor.

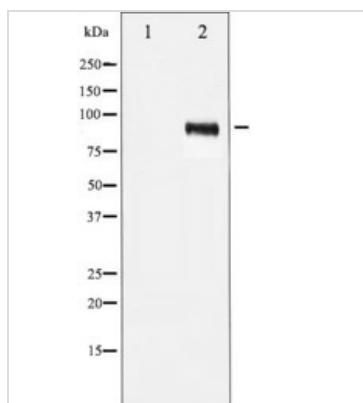
## Properties

<b>Form</b>	Liquid
<b>Buffer</b>	PBS, 150mM NaCl, 50% Glycerol
<b>Preservative</b>	0.02% Sodium azide
<b>Storage</b>	Store as concentrated solution. Centrifuge briefly prior to opening vial. For short-term storage (1-2 weeks), store at 4°C. For long-term storage, aliquot and store at -20°C or below. Avoid multiple freeze-thaw cycles.
<b>Concentration</b>	1 mg/ml (Please refer to the vial label for the specific concentration.)
<b>Immunogen</b>	A synthesized peptide derived from human IGF1R around the phosphorylation site of Tyr1161, which is equivalent to Tyrosine 1131 in signal peptide cleaved IGF1R.
<b>Purification</b>	Antigen affinity purification
<b>Conjugation</b>	Unconjugated
<b>Note</b>	For laboratory research use only. Not for any clinical, therapeutic, or diagnostic use in humans or animals. Not for animal or human consumption.  Purchasers shall not, and agree not to enable third parties to, analyze, copy, reverse engineer or otherwise attempt to determine the structure or sequence of the product.



For full product information, images and publications, please visit our [website](#).

## DATA IMAGES



### GTX52315 WB Image

Western blot analysis of IGF1R phosphorylation expression in Insulin treated 293 whole cell lysates, The lane on the left is treated with the antigen-specific peptide.



For full product information, images and publications, please visit our [website](#).