

AMPK alpha 1 (phospho Thr183) + AMPK alpha 2 (phospho Thr172) antibody

Cat. No. GTX52341

Host	Rabbit
Clonality	Polyclonal
Isotype	IgG
Applications	WB, ICC/IF, IHC-P, IHC
Reactivity	Human, Mouse, Rat

References (16)

★★★★★ Review (1)

Package

100 µg

Applications

Application Note

WB 1:500-1:2000, IHC 1:50-1:200

Calculated MW 64 kDa. ([Note](#))**Product Note** The sequence around AMPK alpha 1 (phospho Thr183) is conserved with the sequence around AMPK alpha 2 (phospho Thr172).AAPK1

Properties

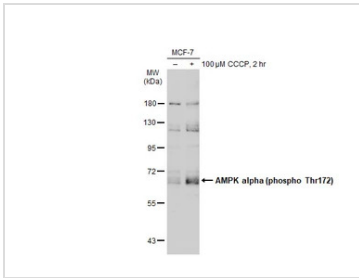
Form Liquid**Buffer** PBS, 150mM NaCl, 50% Glycerol**Preservative** 0.02% Sodium azide**Storage** Store as concentrated solution. Centrifuge briefly prior to opening vial. For short-term storage (1-2 weeks), store at 4°C. For long-term storage, aliquot and store at -20°C or below. Avoid multiple freeze-thaw cycles.**Concentration** 1 mg/ml (Please refer to the vial label for the specific concentration.)**Immunogen** A synthesized peptide derived from human AMPK alpha around the phosphorylation site of Thr172**Purification** Antigen affinity purification**Conjugation** Unconjugated**Note**

For laboratory research use only. Not for any clinical, therapeutic, or diagnostic use in humans or animals. Not for animal or human consumption.

Purchasers shall not, and agree not to enable third parties to, analyze, copy, reverse engineer or otherwise attempt to determine the structure or sequence of the product.

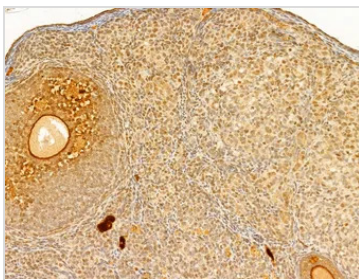
For full product information, images and publications, please visit our [website](#).

DATA IMAGES



GTX52341 WB Image

Untreated (-) and treated (+) MCF-7 whole cell extracts (30 µg) were separated by 7.5% SDS-PAGE, and the membrane was blotted with AMPK alpha 1 (phospho Thr183) + AMPK alpha 2 (phospho Thr172) antibody (GTX52341) diluted at 1:500. The HRP-conjugated anti-rabbit IgG antibody (GTX213110-01) was used to detect the primary antibody, and the signal was developed with Trident ECL plus-Enhanced.

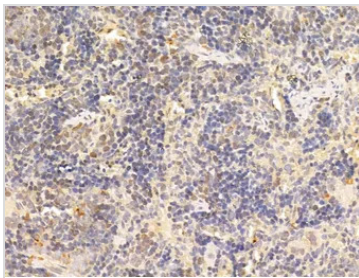


GTX52341 IHC-P Image

IHC-P analysis of mouse kidney tissue using GTX52341 AMPK alpha 1 (phospho Thr183) + AMPK alpha 2 (phospho Thr172) antibody.

Antigen retrieval : Heat mediated antigen retrieval step in citrate buffer

Dilution: 1:100

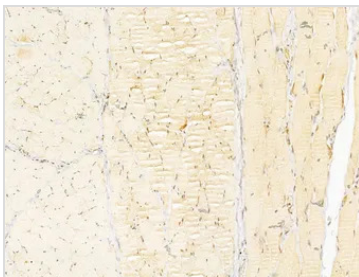


GTX52341 IHC-P Image

IHC-P analysis of rat spleen tissue using GTX52341 AMPK alpha 1 (phospho Thr183) + AMPK alpha 2 (phospho Thr172) antibody.

Antigen retrieval : Heat mediated antigen retrieval step in citrate buffer

Dilution: 1:100

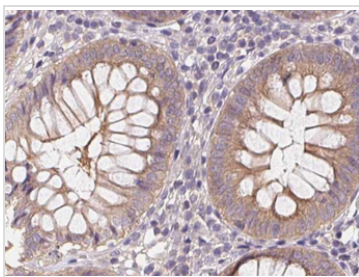


GTX52341 IHC-P Image

IHC-P analysis of rat skin tissue using GTX52341 AMPK alpha 1 (phospho Thr183) + AMPK alpha 2 (phospho Thr172) antibody.

Antigen retrieval : Heat mediated antigen retrieval step in citrate buffer

Dilution: 1:100



GTX52341 IHC-P Image

IHC-P analysis of human colon tissue using GTX52341 AMPK alpha 1 (phospho Thr183) + AMPK alpha 2 (phospho Thr172) antibody.

Antigen retrieval : Heat mediated antigen retrieval step in citrate buffer

Dilution: 1:100



For full product information, images and publications, please visit our [website](#).