

## CaMK2 beta/ gamma/ delta (phospho Thr287) antibody

**Cat. No. GTX52342**

<b>Host</b>	Rabbit
<b>Clonality</b>	Polyclonal
<b>Isotype</b>	IgG
<b>Applications</b>	WB, IHC
<b>Reactivity</b>	Human, Mouse, Rat

References ( 4 )

Package

100 µg

## Applications

## Application Note

WB 1:500-1:2000, IHC 1:50-1:200

**Product Note** CAMK2B

## Properties

<b>Form</b>	Liquid
<b>Buffer</b>	PBS, 150mM NaCl, 50% Glycerol
<b>Preservative</b>	0.02% Sodium azide
<b>Storage</b>	Store as concentrated solution. Centrifuge briefly prior to opening vial. For short-term storage (1-2 weeks), store at 4°C. For long-term storage, aliquot and store at -20°C or below. Avoid multiple freeze-thaw cycles.
<b>Concentration</b>	1 mg/ml (Please refer to the vial label for the specific concentration.)
<b>Immunogen</b>	A synthesized peptide derived from human CaMK2 beta/ gamma/ delta around the phosphorylation site of Thr287
<b>Purification</b>	Antigen affinity purification
<b>Conjugation</b>	Unconjugated

## Note

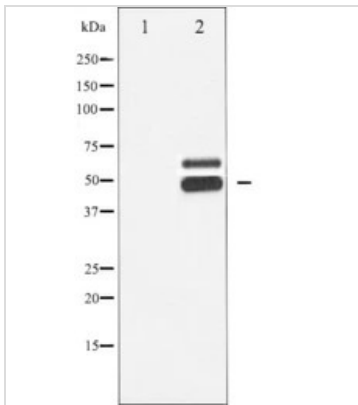
For laboratory research use only. Not for any clinical, therapeutic, or diagnostic use in humans or animals. Not for animal or human consumption.

Purchasers shall not, and agree not to enable third parties to, analyze, copy, reverse engineer or otherwise attempt to determine the structure or sequence of the product.



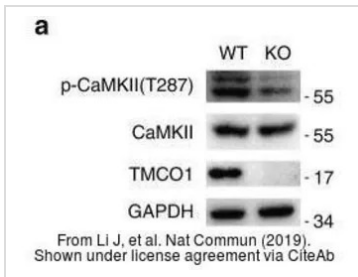
For full product information, images and publications, please visit our [website](#).

DATA IMAGES



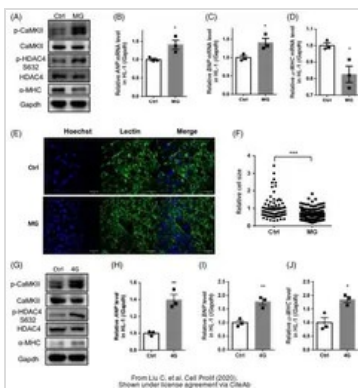
**GTx52342 WB Image**

Western blot analysis of CaMK2- beta/ gamma/ delta phosphorylation expression in Rat braintissue lysates, The lane on the left is treated with the antigen-specific peptide.



**GTx52342 WB Image**

The data was published in the journal Nat Commun in 2019. [PMID: 30962442](https://pubmed.ncbi.nlm.nih.gov/30962442/)



**GTx52342 WB Image**

The data was published in the journal Cell Prolif in 2020. [PMID: 32101357](https://pubmed.ncbi.nlm.nih.gov/32101357/)



For full product information, images and publications, please visit our [website](https://www.genetex.com).