

CaMKII alpha (phospho Thr286) antibody

Cat. No. GTX52346

| | |
|--------------|-------------------|
| Host | Rabbit |
| Clonality | Polyclonal |
| Isotype | IgG |
| Applications | WB, ICC/IF, IHC |
| Reactivity | Human, Mouse, Rat |

Package
100 µg

Applications

Application Note

WB 1:500-1:2000, IHC 1:50-1:200, IF/ICC 1:100-1:500

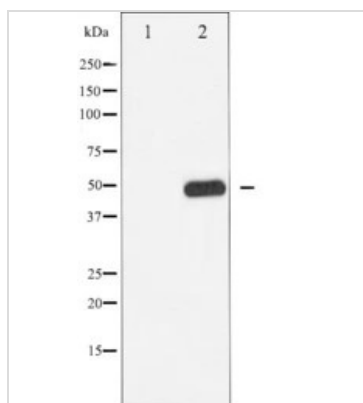
Calculated MW 54 kDa. ([Note](#))

Product Note CAMK2D

Properties

| | |
|---------------|---|
| Form | Liquid |
| Buffer | PBS, 150mM NaCl, 50% Glycerol |
| Preservative | 0.02% Sodium azide |
| Storage | Store as concentrated solution. Centrifuge briefly prior to opening vial. For short-term storage (1-2 weeks), store at 4°C. For long-term storage, aliquot and store at -20°C or below. Avoid multiple freeze-thaw cycles. |
| Concentration | 1 mg/ml (Please refer to the vial label for the specific concentration.) |
| Immunogen | A synthesized peptide derived from human CaMK2 around the phosphorylation site of Thr286 |
| Purification | Antigen affinity purification |
| Conjugation | Unconjugated |
| Note | <p>For laboratory research use only. Not for any clinical, therapeutic, or diagnostic use in humans or animals. Not for animal or human consumption.</p> <p>Purchasers shall not, and agree not to enable third parties to, analyze, copy, reverse engineer or otherwise attempt to determine the structure or sequence of the product.</p> |

For full product information, images and publications, please visit our [website](#).

DATA IMAGES

GTX52346 WB Image

Western blot analysis of CaMK2 phosphorylation expression in K562 whole cell lysates, The lane on the left is treated with the antigen-specific peptide.



For full product information, images and publications, please visit our [website](https://www.genetex.com).