

JNK antibody

Cat. No. GTX52360

Host	Rabbit
Clonality	Polyclonal
Isotype	IgG
Applications	WB, ICC/IF
Reactivity	Human, Mouse, Pig

References (9)

Package

100 µg

Applications

Application Note

*Optimal dilutions/concentrations should be determined by the researcher.

Suggested dilution	Recommended dilution
WB	1:500-1:2000
ICC/IF	1:100-1:500

Not tested in other applications.

Properties

Form	Liquid
Buffer	PBS, 150mM NaCl, 50% Glycerol
Preservative	0.02% Sodium azide
Storage	Store as concentrated solution. Centrifuge briefly prior to opening vial. For short-term storage (1-2 weeks), store at 4°C. For long-term storage, aliquot and store at -20°C or below. Avoid multiple freeze-thaw cycles.
Concentration	1 mg/ml (Please refer to the vial label for the specific concentration.)
Immunogen	A synthesized peptide derived from human JNK1/2/3, corresponding to a region within the internal amino acids.
Purification	Purified by antigen-affinity chromatography
Conjugation	Unconjugated

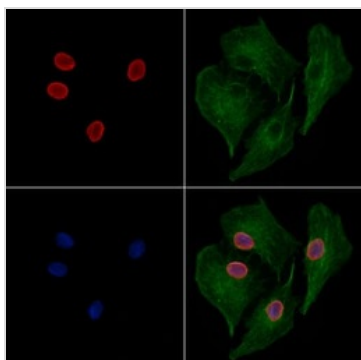
Note

For laboratory research use only. Not for any clinical, therapeutic, or diagnostic use in humans or animals. Not for animal or human consumption.

Purchasers shall not, and agree not to enable third parties to, analyze, copy, reverse engineer or otherwise attempt to determine the structure or sequence of the product.

For full product information, images and publications, please visit our [website](#).

DATA IMAGES



GTX52360 ICC/IF Image

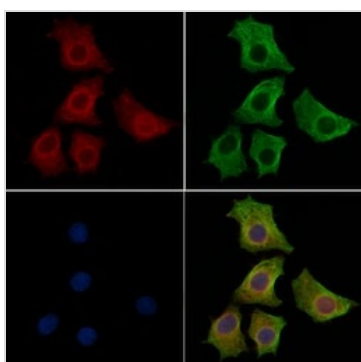
ICC/IF analysis of PFA-fixed A549 cells using GTX52360 JNK antibody.

Red : Primary antibody

Green : Tubulin

Blue : DAPI

Permeabilization : 0.1% Triton X-100



GTX52360 ICC/IF Image

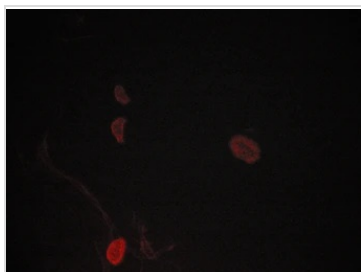
ICC/IF analysis of PFA-fixed HepG2 cells using GTX52360 JNK antibody.

Red : Primary antibody

Green : Tubulin

Blue : DAPI

Permeabilization : 0.1% Triton X-100

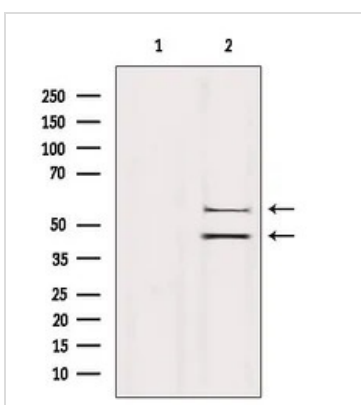


GTX52360 ICC/IF Image

ICC/IF analysis of PFA-fixed LOVO cells using GTX52360 JNK antibody.

Permeabilization : 0.1% saponin

Dilution : 1:400



GTX52360 WB Image

WB analysis of hybridoma cell lysate using GTX52360 JNK antibody. The lane on the left was treated with blocking peptide.



For full product information, images and publications, please visit our [website](#).