

Histone H3 antibody

Cat. No. GTX52367

Host	Rabbit
Clonality	Polyclonal
Isotype	IgG
Application	WB, IHC
Reactivity	Human, Mouse, Rat

Reference (1)

Package

100 µg

APPLICATION

Application Note

WB 1:500-1:2000, IHC 1:50-1:200

Product Note HIST1H3A

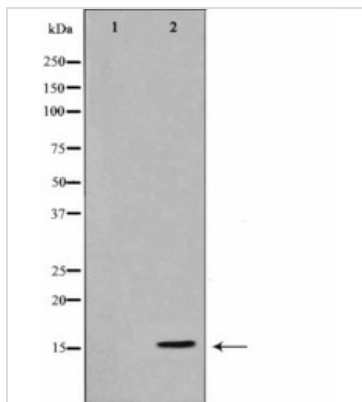
PROPERTIES

Form	Liquid
Buffer	PBS, 150mM NaCl, 50% Glycerol
Preservative	0.02% Sodium azide
Storage	Store as concentrated solution. Centrifuge briefly prior to opening vial. For short-term storage (1-2 weeks), store at 4°C. For long-term storage, aliquot and store at -20°C or below. Avoid multiple freeze-thaw cycles.
Concentration	1 mg/ml (Please refer to the vial label for the specific concentration.)
Immunogen	A synthesized peptide derived from human Histone H3
Purification	Antigen affinity purification
Conjugation	Unconjugated
Note	For laboratory research use only. Not for any clinical, therapeutic, or diagnostic use in humans or animals. Not for animal or human consumption. Purchasers shall not, and agree not to enable third parties to, analyze, copy, reverse engineer or otherwise attempt to determine the structure or sequence of the product.



For full product information, images and publications, please visit our [website](#).

DATA IMAGES



GTX52367 WB Image

Western blot analysis of Histone H3 expression in TSA treated RAW264.7 whole cell lysates, The lane on the left is treated with the antigen-specific peptide.



For full product information, images and publications, please visit our [website](#).