

CaMK2 alpha/delta antibody

Cat. No. GTX52377

Host	Rabbit
Clonality	Polyclonal
Isotype	IgG
Applications	WB, ICC/IF, IHC-P, IHC
Reactivity	Human, Mouse, Rat

References (2)

Package

100 µg

Applications

Application Note

WB 1:500-1:2000, IHC 1:50-1:200, IF/ICC 1:100-1:500

Product Note CAMK2D

Properties

Form	Liquid
Buffer	PBS, 150mM NaCl, 50% Glycerol
Preservative	0.02% Sodium azide
Storage	Store as concentrated solution. Centrifuge briefly prior to opening vial. For short-term storage (1-2 weeks), store at 4°C. For long-term storage, aliquot and store at -20°C or below. Avoid multiple freeze-thaw cycles.
Concentration	1 mg/ml (Please refer to the vial label for the specific concentration.)
Immunogen	A synthesized peptide derived from human CaMK2 alpha/delta
Purification	Antigen affinity purification
Conjugation	Unconjugated

Note

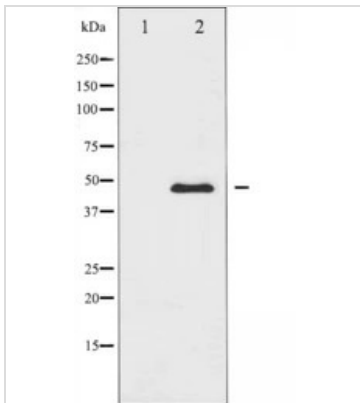
For laboratory research use only. Not for any clinical, therapeutic, or diagnostic use in humans or animals. Not for animal or human consumption.

Purchasers shall not, and agree not to enable third parties to, analyze, copy, reverse engineer or otherwise attempt to determine the structure or sequence of the product.



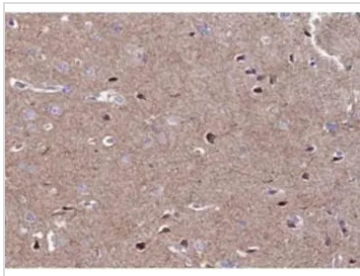
For full product information, images and publications, please visit our [website](#).

DATA IMAGES



GTX52377 WB Image

Western blot analysis of CaMK2 alpha/delta expression in NIH-3T3 whole cell lysates, The lane on the left is treated with the antigen-specific peptide.



GTX52377 IHC-P Image

IHC-P analysis of human brain tissue using GTX52377 CaMK2 alpha/delta antibody.

Antigen retrieval : heat-induced antigen retrieval with a citrate buffer (pH6)

Dilution : 1:100



For full product information, images and publications, please visit our [website](https://www.genetex.com).