

## LRRK2 antibody

**Cat. No. GTX52385**

<b>Host</b>	Rabbit
<b>Clonality</b>	Polyclonal
<b>Isotype</b>	IgG
<b>Applications</b>	WB, IHC-P, IHC-Fr, IP
<b>Reactivity</b>	Human, Mouse, Rat, Pig, Primate

**Package**  
100 µl

## Applications

**Application Note**

\*Optimal dilutions/concentrations should be determined by the researcher.

Suggested dilution	Recommended dilution
WB	1:1000
IHC-P	Assay dependent
IHC-Fr	Assay dependent
IP	1:10 - 1:500

Not tested in other applications.

## Properties

<b>Form</b>	Liquid
<b>Buffer</b>	Tris-Citrate/Phosphate
<b>Preservative</b>	0.05% Sodium azide
<b>Storage</b>	Store as concentrated solution. Centrifuge briefly prior to opening vial. Store at 4°C. DO NOT FREEZE.
<b>Concentration</b>	1 mg/ml (Please refer to the vial label for the specific concentration.)
<b>Immunogen</b>	A synthetic peptide made to a C-terminal region, within residues 2500-2527 of the human LRRK2 protein, conjugated to KLH. [Swiss-Prot# Q5S007]
<b>Purification</b>	Purified by antigen-affinity chromatography
<b>Conjugation</b>	Unconjugated

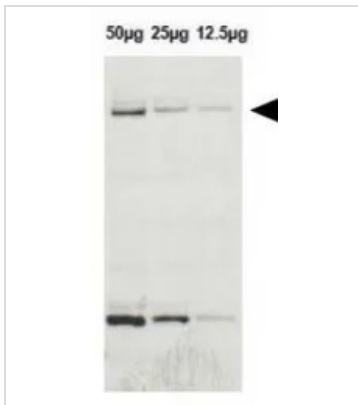
**Note** For laboratory research use only. Not for any clinical, therapeutic, or diagnostic use in humans or animals. Not for animal or human consumption.

Purchasers shall not, and agree not to enable third parties to, analyze, copy, reverse engineer or otherwise attempt to determine the structure or sequence of the product.

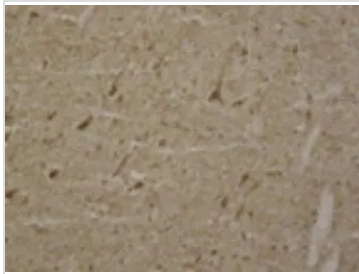


For full product information, images and publications, please visit our [website](#).

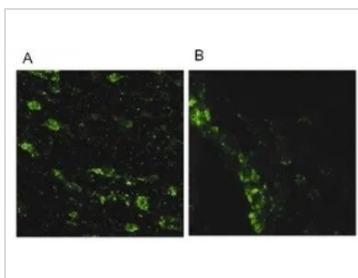
## DATA IMAGES

**GTX52385 WB Image**

WB analysis of human lymphoblast cell lysate using GTX52385 LRRK2 antibody.

**GTX52385 IHC-P Image**

IHC-P analysis of mouse brain stem tissue using GTX52385 LRRK2 antibody.

**GTX52385 IHC-Fr Image**

IHC-Fr analysis of (A) substantia nigra neurons (B) chains of migrating neuroblasts using GTX52385 LRRK2 antibody.



For full product information, images and publications, please visit our [website](#).