

EPO antibody [5D12]

Cat. No. GTX52386

Host	Rabbit
Clonality	Monoclonal
Isotype	IgG
Applications	WB, IHC-P
Reactivity	Human

Package
50 µg

Applications

Application Note

*Optimal dilutions/concentrations should be determined by the researcher.

Suggested dilution	Recommended dilution
WB	1:600 - 1:2000
IHC-P	1:50 - 1:200

Not tested in other applications.

Calculated MW 21 kDa. ([Note](#))

Properties

Form Liquid

Buffer PBS

Preservative No preservatives

Storage Store as concentrated solution. Centrifuge briefly prior to opening vial. For short-term storage (1-2 weeks), store at 4°C. For long-term storage, aliquot and store at -20°C or below. Avoid multiple freeze-thaw cycles.

Concentration Batch dependent (Please refer to the vial label for the specific concentration.)

Immunogen Human recombinant EPO

Purification Protein A/G purified
From serum

Conjugation Unconjugated

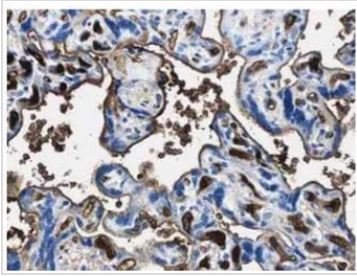
Note For laboratory research use only. Not for any clinical, therapeutic, or diagnostic use in humans or animals. Not for animal or human consumption.

Purchasers shall not, and agree not to enable third parties to, analyze, copy, reverse engineer or otherwise attempt to determine the structure or sequence of the product.



For full product information, images and publications, please visit our [website](#).

DATA IMAGES

**GTX52386 IHC-P Image**

IHC-P analysis of formalin fixed human placenta tissue using GTX52386 EPO antibody.



For full product information, images and publications, please visit our [website](#).